

For Research Use Only

# CoraLite® Plus 488-conjugated CALD1 Monoclonal antibody



Catalog Number: CL488-66693

Featured Product

## Basic Information

Catalog Number:

CL488-66693

Size:

1000 µg/ml

Source:

Mouse

Isotype:

IgG2b

Immunogen Catalog Number:

AG13676

GenBank Accession Number:

BC040354

GeneID (NCBI):

800

UNIPROT ID:

Q05682

Full Name:

caldesmon 1

Calculated MW:

538 aa, 63 kDa

Observed MW:

70 kDa-75 kDa

Purification Method:

Protein A purification

CloneNo.:

1E1C11

Recommended Dilutions:

IF/ICC 1:50-1:500

Excitation/Emission maxima

wavelengths:

493 nm / 522 nm

## Applications

Tested Applications:

IF/ICC, FC (Intra)

Species Specificity:

human, mouse, rat

Positive Controls:

IF/ICC : HepG2 cells,

## Background Information

### Storage

Storage:

Store at -20°C. Avoid exposure to light. Stable for one year after shipment.

Storage Buffer:

PBS with 50% Glycerol, 0.05% Proclin300, 0.5% BSA, pH 7.3.

Aliquoting is unnecessary for -20°C storage

For technical support and original validation data for this product please contact:

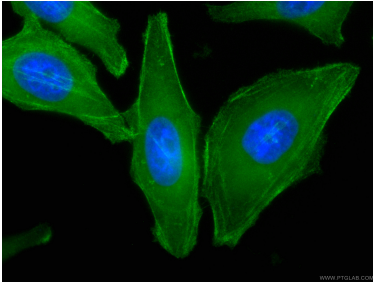
T: 4006900926

E: [Proteintech-CN@ptglab.com](mailto:Proteintech-CN@ptglab.com)

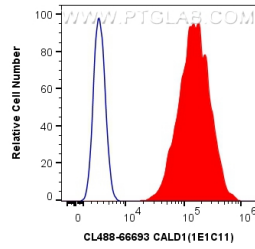
W: [ptgcn.com](http://ptgcn.com)

This product is exclusively available under Proteintech Group brand and is not available to purchase from any other manufacturer.

## Selected Validation Data



Immunofluorescent analysis of (4% PFA) fixed HepG2 cells using CL488-66693 (CALD1 antibody) at dilution of 1:100.



1X10<sup>6</sup> HeLa cells were intracellularly stained with 0.8 ug CoraLite® Plus 488 Anti-Human CALD1 (CL488-66693, Clone:1E1C11) (red), or 0.8 ug CoraLite® Plus 488 Mouse IgG2b Isotype Control (MPC-11) (CL488-65128, Clone: MPC-11) (blue). Cells were fixed with 4% PFA and permeabilized with Flow Cytometry Perm Buffer (PF00011-C).