

For Research Use Only

# CoraLite® Plus 488-conjugated FKBP8 Monoclonal antibody



Catalog Number: CL488-66690

## Basic Information

<b>Catalog Number:</b> CL488-66690	<b>GenBank Accession Number:</b> BC009966	<b>Purification Method:</b> Protein G purification
<b>Size:</b> 1000 µg/ml	<b>GeneID (NCBI):</b> 23770	<b>CloneNo.:</b> 1C1G12
<b>Source:</b> Mouse	<b>UNIPROT ID:</b> Q14318	<b>Excitation/Emission maxima wavelengths:</b> 493 nm / 522 nm
<b>Isotype:</b> IgG1	<b>Full Name:</b> FK506 binding protein 8, 38kDa	
<b>Immunogen Catalog Number:</b> AG1649	<b>Calculated MW:</b> 45 kDa	
	<b>Observed MW:</b> 53 kDa	

## Applications

**Tested Applications:**  
FC (Intra)

**Species Specificity:**  
Human, Mouse

## Background Information

FK506 binding protein 8 (FKBP8), is a member of the immunophilin protein family, which play a role in immunoregulation and basic cellular processes involving protein folding and trafficking. FKBP8 does not seem to have PPIase/rotamase activity, which is different from other members of this family. The active form of FKBP8 may play a role in the regulation of apoptosis. FKBP8 has 3 isoforms produced by alternative splicing.

## Storage

**Storage:**  
Store at -20°C. Avoid exposure to light. Stable for one year after shipment.

**Storage Buffer:**  
PBS with 50% Glycerol, 0.05% Proclin300, 0.5% BSA, pH 7.3.

**Aliquoting is unnecessary for -20°C storage**

For technical support and original validation data for this product please contact:

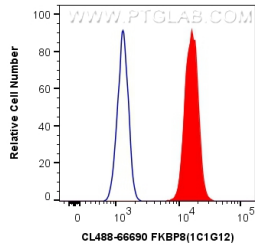
T: 4006900926

E: [Proteintech-CN@ptglab.com](mailto:Proteintech-CN@ptglab.com)

W: [ptgcn.com](http://ptgcn.com)

**This product is exclusively available under Proteintech Group brand and is not available to purchase from any other manufacturer.**

## Selected Validation Data



1X10<sup>6</sup> A431 cells were intracellularly stained with 0.4 ug CoraLite® Plus 488 Anti-Human FKBP8 (CL488-66690, Clone:1C1G12) (red), or 0.4 ug Control Antibody. Cells were fixed with 4% PFA and permeabilized with Flow Cytometry Perm Buffer (PF00011-C).