

For Research Use Only

# CoraLite® Plus 488-conjugated PSMA/GCPII Monoclonal antibody



Catalog Number:CL488-66678

## Basic Information

Catalog Number: CL488-66678	GenBank Accession Number: BC025672	Purification Method: Protein G purification
Size: 1000 µg/ml	GeneID (NCBI): 2346	CloneNo.: 3G4E12
Source: Mouse	UNIPROT ID: Q04609	Recommended Dilutions: IF-P 1:50-1:500 IF/ICC 1:50-1:500
Isotype: IgG1	Full Name: folate hydrolase (prostate-specific membrane antigen) 1	Excitation/Emission maxima wavelengths: 493 nm / 522 nm
Immunogen Catalog Number: AG16594	Calculated MW: 719 aa, 81 kDa	
	Observed MW: 100-120 kDa	

## Applications

Tested Applications: IF/ICC, IF-P	Positive Controls:
Species Specificity: human, rat	IF-P : human prostate cancer tissue, PC-3 cells IF/ICC : PC-3 cells,

## Background Information

PSMA(Prostate-specific membrane antigen) is also named as FOLH1, FOLH, NAALAD1, PSM and belongs to the peptidase M28 family. PSMA is a 100-120 kDa integral transmembrane glycoprotein, considered to be a highly specific marker of the prostate gland, and has successfully been used as a marker of circulating prostatic epithelial cells(PMID:10074909; 15680901). It is involved in conversion of the major neurotransmitter (NAAAG) to NAA and free glutamate. It has 8 isoforms produced by alternative splicing.

## Storage

**Storage:**  
Store at -20°C. Avoid exposure to light. Stable for one year after shipment.  
**Storage Buffer:**  
PBS with 50% Glycerol, 0.05% Proclin300, 0.5% BSA, pH 7.3.  
Aliquoting is unnecessary for -20°C storage

For technical support and original validation data for this product please contact:

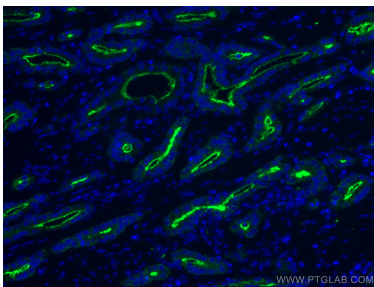
T: 4006900926

E: [Proteintech-CN@ptglab.com](mailto:Proteintech-CN@ptglab.com)

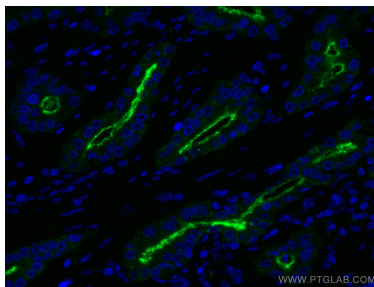
W: [ptgcn.com](http://ptgcn.com)

This product is exclusively available under Proteintech Group brand and is not available to purchase from any other manufacturer.

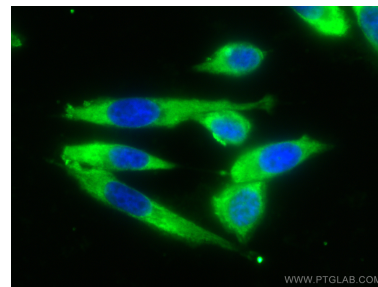
## Selected Validation Data



Immunofluorescent analysis of (4% PFA) fixed human prostate cancer tissue using CoraLite® Plus 488 PSMA/GCPII antibody (CL488-66678, Clone: 3G4E12 ) at dilution of 1:200.



Immunofluorescent analysis of (4% PFA) fixed human prostate cancer tissue using CoraLite® Plus 488 PSMA/GCPII antibody (CL488-66678, Clone: 3G4E12 ) at dilution of 1:200.



Immunofluorescent analysis of (-20°C Ethanol) fixed PC-3 cells using CoraLite® Plus 488 PSMA/GCPII antibody (CL488-66678, Clone: 3G4E12 ) at dilution of 1:100.