

# CoraLite® Plus 488-conjugated ASF/SF2 Monoclonal antibody

Catalog Number: **CL488-66671**

## Basic Information

**Catalog Number:**

CL488-66671

**Size:**

1000 µg/ml

**Source:**

Mouse

**Isotype:**

IgG1

**Immunogen Catalog Number:**

AG3626

**GenBank Accession Number:**

BC010264

**GeneID (NCBI):**

6426

**UNIPROT ID:**

Q07955

**Full Name:**

splicing factor, arginine/serine-rich 1

**Calculated MW:**

248 aa, 28 kDa

**Observed MW:**

32 kDa, 28 kDa, 22 kDa

**Purification Method:**

Protein G purification

**CloneNo.:**

1A6C5

**Recommended Dilutions:**

IF/ICC 1:50-1:500

**Excitation/Emission maxima****wavelengths:**

493 nm / 522 nm

## Applications

**Tested Applications:**

IF/ICC

**Species Specificity:**

Human, mouse, rat

**Positive Controls:**

IF/ICC : HepG2 cells,

## Background Information

SFRS1, also named as ASF, SF2, SF2P33, SFRS1 and ASF-1, belongs to the splicing factor SR family. It plays a role in preventing exon skipping, ensuring the accuracy of splicing and regulating alternative splicing. SFRS1 interacts with other spliceosomal components, via the RS domains, to form a bridge between the 5'- and 3'-splice site binding components, U1 snRNP and U2AF. Isoform ASF-2 and isoform ASF-3 act as splicing repressors. This antibody can recognize all the 3 isoforms(28kd,33kd and 22kd) of SFRS1.

## Storage

**Storage:**

Store at -20°C. Avoid exposure to light.

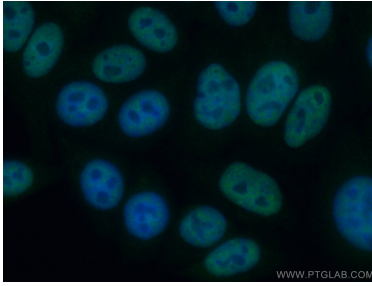
**Storage Buffer:**

PBS with 50% Glycerol, 0.05% Proclin300, 0.5% BSA, pH 7.3.

Aliquoting is unnecessary for -20°C storage

---

## Selected Validation Data



Immunofluorescent analysis of (4% PFA) fixed HepG2 cells using CoraLite® Plus 488-conjugated ASF/SF2 antibody (CL488-66671, Clone: 1A6C5 ) at dilution of 1:100.