

# CoraLite® Plus 488-conjugated IGFBP2 Monoclonal antibody

Catalog Number: **CL488-66644**

## Basic Information

Catalog Number:

CL488-66644

Size:

1000 µg/ml

Source:

Mouse

Isotype:

IgG1

Immunogen Catalog Number:

AG8421

GenBank Accession Number:

BC004312

GeneID (NCBI):

3485

UNIPROT ID:

P18065

Full Name:

IGF binding protein 2

Calculated MW:

36 kDa

Observed MW:

36 kDa

Purification Method:

Protein G purification

CloneNo.:

2F10D1

Recommended Dilutions:

IF/ICC 1:50-1:500

Excitation/Emission maxima  
wavelengths:

493 nm / 522 nm

## Applications

Tested Applications:

IF/ICC, FC (Intra)

Species Specificity:

Human, Mouse, rat

Positive Controls:

IF/ICC : MCF-7 cells,

## Background Information

Insulin-like growth factors (IGFs) and their binding proteins (IGFBPs) have important metabolic roles in the human body. The levels of IGFBP2 are elevated during progression of many human cancers.

## Storage

Storage:

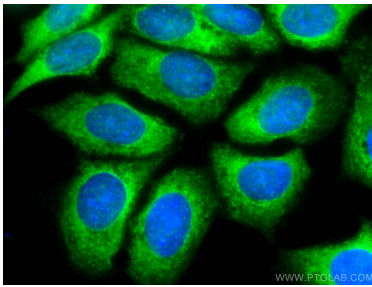
Store at -20°C. Avoid exposure to light. Stable for one year after shipment.

Storage Buffer:

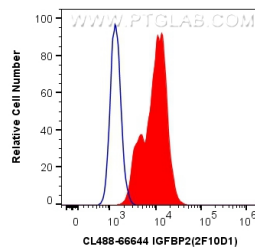
PBS with 50% Glycerol, 0.05% Proclin300, 0.5% BSA, pH 7.3.

Aliquoting is unnecessary for -20°C storage

## Selected Validation Data



Immunofluorescent analysis of (-20°C Methanol) fixed MCF-7 cells using CoraLite® Plus 488 IGFBP2 antibody (CL488-66644, Clone: 2F10D1 ) at dilution of 1:200.



1X10<sup>6</sup> MCF-7 cells were intracellularly stained with 0.4 ug CoraLite® Plus 488 Anti-Human IGFBP2 (CL488-66644, Clone:2F10D1) (red), or 0.4 ug Control Antibody. Cells were fixed with 4% PFA and permeabilized with Flow Cytometry Perm Buffer (PF00011-C).