

# CoraLite® Plus 488-conjugated CHST4 Monoclonal antibody

Catalog Number: **CL488-66623**

## Basic Information

**Catalog Number:**

CL488-66623

**Size:**

1000 µg/ml

**Source:**

Mouse

**Isotype:**

IgG1

**Immunogen Catalog Number:**

AG3987

**GenBank Accession Number:**

BC035282

**GeneID (NCBI):**

10164

**UNIPROT ID:**

Q8NCG5

**Full Name:**carbohydrate (N-acetylglucosamine  
6-O) sulfotransferase 4**Calculated MW:**

370 aa, 43 kDa

**Observed MW:**

48 kDa

**Purification Method:**

Protein G purification

**CloneNo.:**

1E1A4

**Recommended Dilutions:**

IF/ICC 1:50-1:500

**Excitation/Emission maxima  
wavelengths:**

493 nm / 522 nm

## Applications

**Tested Applications:**

IF/ICC

**Species Specificity:**

Human

**Positive Controls:**

IF/ICC : HeLa cells,

## Background Information

CHST4, also named as HEC GlcNAc6ST and GlcNAc6ST 2, is one of a major GlcNAc-6-O-sulfotransferases involved in synthesizing the L-selectin ligands mediating lymphocyte homing. CHST4 is associated with the expression of MECA-79 epitope on HEV. It has been reported that the transcripts of CHST4 can be detected in lymph node, liver, pancreas and high endothelial venules (HEVs) but at a low level in HUVECs. Besides, CHST4 is expressed at a high level in gastric and colorectal cancer patients compared with normal mucosa. (PMID:30093410, 27748735, 10330415)

## Storage

**Storage:**

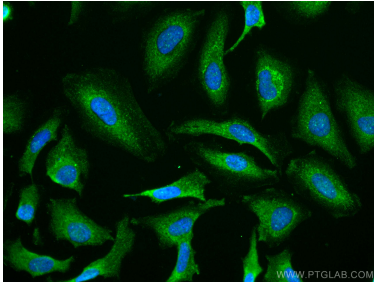
Store at -20°C. Avoid exposure to light.

**Storage Buffer:**

PBS with 50% Glycerol, 0.05% Proclin300, 0.5% BSA, pH 7.3.

Aliquoting is unnecessary for -20°C storage

## Selected Validation Data



Immunofluorescent analysis of (-20°C Ethanol) fixed HeLa cells using CoraLite® Plus 488 CHST4 antibody (CL488-66623, Clone: 1E1A4 ) at dilution of 1:200.