

For Research Use Only

CoraLite® Plus 488-conjugated SDHA Monoclonal antibody

Catalog Number: CL488-66588



Basic Information

Catalog Number:

CL488-66588

Source:

Mouse

Isotype:

IgG1

Immunogen Catalog Number:

AG7023

GenBank Accession Number:

BC001380

GeneID (NCBI):

6389

UNIPROT ID:

P31040

Full Name:

succinate dehydrogenase complex, subunit A, flavoprotein (Fp)

Calculated MW:

73 kDa

Observed MW:

62-73 kDa

Purification Method:

Protein G purification

CloneNo.:

5E10G12

Recommended Dilutions:

IF/ICC: 1:50-1:500

FC (Intra): 0.40 ug per 10⁶ cells in a 100 µl suspension

Excitation/Emission maxima wavelengths:

493 nm / 522 nm

Applications

Tested Applications:

IF/ICC, FC (Intra)

Species Specificity:

human, mouse, rat

Positive Controls:

IF/ICC : HepG2 cells,

FC (Intra) : HeLa cells,

Background Information

SDHA, also named as SDH2, SDHF and Fp, belongs to the FAD-dependent oxidoreductase 2 family and FRD/SDH subfamily. SDHA is the flavoprotein subunit of succinate dehydrogenase (SDH) that is involved in complex II of the mitochondrial electron transport chain and is responsible for transferring electrons from succinate to ubiquinone (coenzyme Q). SDHA has 3 isoforms with the molecular mass of 73, 67 and 57 kDa, and the N-terminal (~5 kDa) can be removed in mature form. It can be detected a band of 68 kDa in cutaneous melanoma (PMID:21698147). SDHA may act as a tumor suppressor.

Storage

Storage:

Store at -20°C. Avoid exposure to light. Stable for one year after shipment.

Storage Buffer:

PBS with 50% glycerol, 0.05% Proclin300, 0.5% BSA, pH7.3

Aliquoting is unnecessary for -20°C storage

For technical support and original validation data for this product please contact:

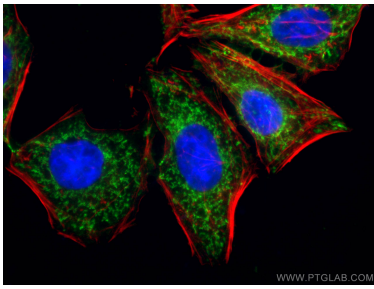
T: 4006900926

E: Proteintech-CN@ptglab.com

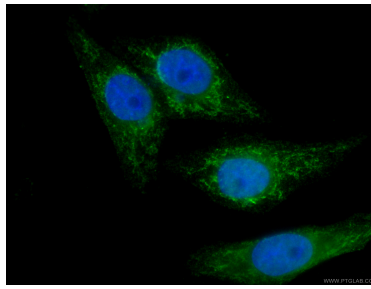
W: ptgcn.com

This product is exclusively available under Proteintech Group brand and is not available to purchase from any other manufacturer.

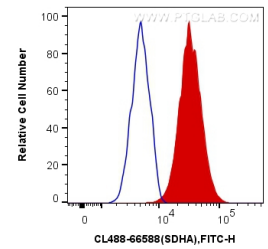
Selected Validation Data



Immunofluorescent analysis of (4% PFA) fixed HepG2 cells using CoraLite® Plus 488-conjugated SDHA antibody (CL488-66588, Clone: 5E10G12) at dilution of 1:100. Red: CL594-Phalloidin stains F-Actin; Blue: DAPI.



Immunofluorescent analysis of (4% PFA) fixed HepG2 cells using CL488-66588 (SDHA antibody) at dilution of 1:100.



1X10⁶ HeLa cells were intracellularly stained with 0.4 ug CoraLite® Plus 488 Anti-Human SDHA (CL488-66588, Clone:5E10G12) (red), or 0.4 ug Control Antibody. Cells were fixed with 4% PFA and permeabilized with Flow Cytometry Perm Buffer.