

# CoraLite® Plus 488-conjugated CIN85 Monoclonal antibody

Catalog Number: **CL488-66571**

## Basic Information

<b>Catalog Number:</b> CL488-66571	<b>GenBank Accession Number:</b> BC015806	<b>Purification Method:</b> Protein G purification
<b>Size:</b> 1000 µg/ml	<b>GeneID (NCBI):</b> 30011	<b>CloneNo.:</b> 3C12D2
<b>Source:</b> Mouse	<b>UNIPROT ID:</b> Q96B97	<b>Recommended Dilutions:</b> WB 1:500-1:1000
<b>Isotype:</b> IgG1	<b>Full Name:</b> SH3-domain kinase binding protein 1	<b>Excitation/Emission maxima wavelengths:</b> 493 nm / 522 nm
<b>Immunogen Catalog Number:</b> AG2777	<b>Calculated MW:</b> 665 aa, 73 kDa	
	<b>Observed MW:</b> 85 kDa	

## Applications

<b>Tested Applications:</b> WB	<b>Positive Controls:</b> WB : K-562 cells, THP-1 cells, HL-60 cells, Jurkat cells
<b>Species Specificity:</b> Human, mouse, rat	

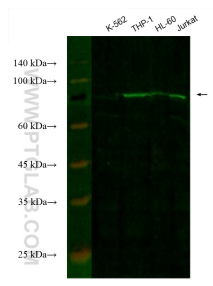
## Background Information

CIN85 is identified as a Cbl-interacting protein of 85 kDa and belongs to adaptor/scaffold proteins. It composed of three N-terminal SH3 domains followed by a proline-rich region and a C-terminal coiled-coil region. In association with c-Cbl (Casitas B-lineage lymphoma), an E3 ubiquitin ligase. As an adaptor protein, CIN85 is involved in Cbl-dependent EGFR internalization, intracellular receptor trafficking, sorting and degradation. Moreover, through the SH3 domains and the proline-rich region, CIN85 is implicated in many protein-protein interactions and it is found to play important roles in other processes such as apoptosis, rearrangement of actin cytoskeleton, cell adhesion, immunological synapse, cell migration and invasion.

## Storage

**Storage:**  
Store at -20°C. Avoid exposure to light. Stable for one year after shipment.  
**Storage Buffer:**  
PBS with 50% Glycerol, 0.05% Proclin300, 0.5% BSA, pH 7.3.  
Aliquoting is unnecessary for -20°C storage

## Selected Validation Data



Various lysates were subjected to SDS PAGE followed by western blot with CL488-66571 (CIN85 antibody) at dilution of 1:500 incubated at room temperature for 1.5 hours.