

# CoraLite® Plus 488-conjugated PLDN Monoclonal antibody

Catalog Number: **CL488-66558**

## Basic Information

Catalog Number: <b>CL488-66558</b>	GenBank Accession Number: <b>BC004819</b>	Purification Method: <b>Protein G purification</b>
Size: <b>1000 µg/ml</b>	GeneID (NCBI): <b>26258</b>	CloneNo.: <b>4F4C11</b>
Source: <b>Mouse</b>	UNIPROT ID: <b>Q9UL45</b>	Recommended Dilutions: <b>IF/ICC 1:50-1:500</b>
Isotype: <b>IgG1</b>	Full Name: <b>pallidin homolog (mouse)</b>	Excitation/Emission maxima wavelengths: <b>493 nm / 522 nm</b>
Immunogen Catalog Number: <b>AG18095</b>	Calculated MW: <b>23~24 kDa</b>	
	Observed MW: <b>26 kDa</b>	

## Applications

Tested Applications: <b>IF/ICC</b>	Positive Controls: <b>IF/ICC : MCF-7 cells,</b>
Species Specificity: <b>Human, Mouse, Rat</b>	

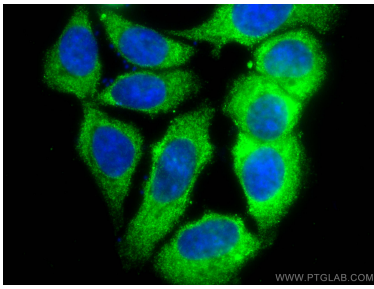
## Background Information

Pallidin, also named as PLDN and PA, is involved in the development of lysosome-related organelles, such as melanosomes and platelet-dense granules. It may play a role in intracellular vesicle trafficking, particularly in the vesicle-docking and fusion process. Pallidin interacts with syntaxin-12 which is a t-SNARE protein that mediates vesicle docking and fusion.

## Storage

**Storage:**  
Store at -20°C. Avoid exposure to light. Stable for one year after shipment.  
**Storage Buffer:**  
PBS with 50% Glycerol, 0.05% Proclin300, 0.5% BSA, pH 7.3.  
**Aliquoting is unnecessary for -20°C storage**

## Selected Validation Data



Immunofluorescent analysis of (-20°C Methanol) fixed MCF-7 cells using CoraLite® Plus 488 PLDN antibody (CL488-66558, Clone: 4F4C11 ) at dilution of 1:200.