

# CoraLite® Plus 488-conjugated RYR1 Monoclonal antibody

Catalog Number: **CL488-66539**

## Basic Information

**Catalog Number:**

CL488-66539

**Size:**

1000 µg/ml

**Source:**

Mouse

**Isotype:**

IgG1

**Immunogen Catalog Number:**

AG25120

**GenBank Accession Number:**

NM\_000540

**GeneID (NCBI):**

6261

**UNIPROT ID:**

P21817

**Full Name:**

ryanodine receptor 1 (skeletal)

**Calculated MW:**

565 kDa

**Purification Method:**

Protein G purification

**CloneNo.:**

1B4E12

**Recommended Dilutions:**

IF/ICC 1:50-1:500

**Excitation/Emission maxima  
wavelengths:**

493 nm / 522 nm

## Applications

**Tested Applications:**

IF/ICC

**Species Specificity:**

Human, rat

**Positive Controls:**

IF/ICC : PC-12 cells,

## Background Information

Ryanodine receptor isoform-1 (RyR1) is a major calcium channel in skeletal muscle important for excitation-contraction coupling. The transmembrane region of RyR1 is comprised of two domains including the pseudo voltage sensor domain and the pore-forming domain (PMID: 27855725). Dominant RyR1 mutations are the leading cause of MH. Studies on the Ca<sup>2+</sup> conducting properties of RyR1 channels containing Malignant hyperthermia mutations expressed in myotubes.

## Storage

**Storage:**

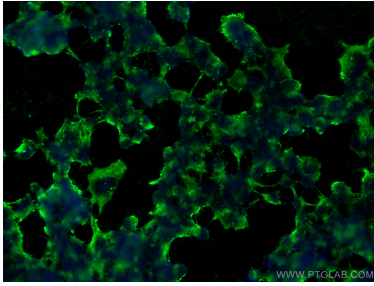
Store at -20°C. Avoid exposure to light. Stable for one year after shipment.

**Storage Buffer:**

PBS with 50% Glycerol, 0.05% Proclin300, 0.5% BSA, pH 7.3.

Aliquoting is unnecessary for -20°C storage

## Selected Validation Data



Immunofluorescent analysis of (-20°C Ethanol) fixed PC-12 cells using CoraLite® Plus 488 RYR1 antibody (CL488-66539, Clone: 1B4E12 ) at dilution of 1:100.