

# CoraLite® Plus 488-conjugated IDO1 Monoclonal antibody

Catalog Number: **CL488-66528**

## Basic Information

**Catalog Number:**

CL488-66528

**Size:**

1000 µg/ml

**Source:**

Mouse

**Isotype:**

IgG1

**Immunogen Catalog Number:**

AG3953

**GenBank Accession Number:**

BC027882

**GeneID (NCBI):**

3620

**UNIPROT ID:**

P14902

**Full Name:**

indoleamine 2,3-dioxygenase 1

**Calculated MW:**

403 aa, 45 kDa

**Observed MW:**

42 kDa

**Purification Method:**

Protein G purification

**CloneNo.:**

3G2G11

**Recommended Dilutions:**

WB 1:500-1:2000

**Excitation/Emission maxima wavelengths:**

493 nm / 522 nm

## Applications

**Tested Applications:**

WB

**Species Specificity:**

Human, mouse, rat

**Positive Controls:**

WB : IFN gamma treated HeLa cells,

## Background Information

IDO1 is the target for therapy in a range of clinical settings, including cancer, chronic infections, autoimmune and allergic syndromes, and transplantation. Elevated IDO1 expression is a hallmark of major viral infections including HIV, HBV, HCV or influenza and also of major bacteria infections, such as Tb, CAP, listeriosis and sepsis. Pathogens are able to hijack the immunosuppressive effects of IDO1 and make use of them to facilitate their own life cycle. MW of IDO1 is 40-42kd (PMID: 14502282; 17055065).

## Storage

**Storage:**

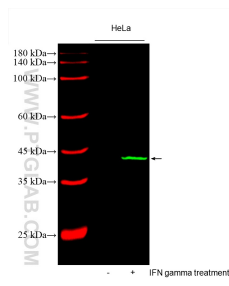
Store at -20°C. Avoid exposure to light. Stable for one year after shipment.

**Storage Buffer:**

PBS with 50% Glycerol, 0.05% Proclin300, 0.5% BSA, pH 7.3.

Aliquoting is unnecessary for -20°C storage

## Selected Validation Data



Various lysates were subjected to SDS PAGE followed by western blot with CL488-66528 (IDO1 antibody) at dilution of 1:1000 incubated at room temperature for 1.5 hours.