

For Research Use Only

# CoraLite® Plus 488-conjugated IGF2BP3 Monoclonal antibody



Catalog Number: **CL488-66526**

## Basic Information

Catalog Number:

CL488-66526

Size:

1000 µg/ml

Source:

Mouse

Isotype:

IgG1

Immunogen Catalog Number:

AG6349

GenBank Accession Number:

BC065269

GeneID (NCBI):

10643

UNIPROT ID:

O00425

Full Name:

insulin-like growth factor 2 mRNA  
binding protein 3

Calculated MW:

64 kDa

Observed MW:

65 kDa

Purification Method:

Protein G purification

CloneNo.:

2C10B11

Recommended Dilutions:

IF/ICC 1:50-1:500

Excitation/Emission maxima  
wavelengths:

493 nm / 522 nm

## Applications

Tested Applications:

IF/ICC

Species Specificity:

Human, mouse, rat

Positive Controls:

IF/ICC : MCF-7 cells,

## Background Information

IGF2BP3, also named as IMP3, KOC1 and VICKZ3, belongs to the RRM1IMP/VICKZ family. It is one of the RNA binding proteins involved in mRNA localization and translational control. IGF2BP3 is expressed during embryogenesis, as well as in some malignant tumors. It can be used as an independent prognostic factor for osteosarcoma.

## Storage

Storage:

Store at -20°C. Avoid exposure to light. Stable for one year after shipment.

Storage Buffer:

PBS with 50% Glycerol, 0.05% Proclin300, 0.5% BSA, pH 7.3.

Aliquoting is unnecessary for -20°C storage

For technical support and original validation data for this product please contact:

T: 4006900926

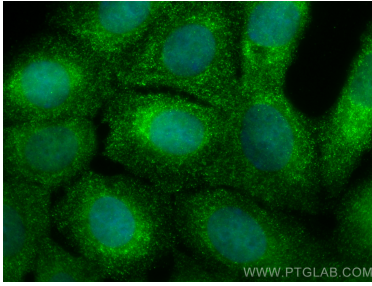
E: [Proteintech-CN@ptglab.com](mailto:Proteintech-CN@ptglab.com)

W: [ptgcn.com](http://ptgcn.com)

This product is exclusively available under Proteintech Group brand and is not available to purchase from any other manufacturer.

---

## Selected Validation Data



Immunofluorescent analysis of (4% PFA) fixed MCF-7 cells using CoraLite® Plus 488 IGF2BP3 antibody (CL488-66526, Clone: 2C10B11 ) at dilution of 1:200.