

For Research Use Only

# CoraLite® Plus 488-conjugated MDH1 Monoclonal antibody



Catalog Number: **CL488-66505**

Featured Product

## Basic Information

Catalog Number:

CL488-66505

Size:

1000 µg/ml

Source:

Mouse

Isotype:

IgG1

Immunogen Catalog Number:

AG8744

GenBank Accession Number:

BC001484

GeneID (NCBI):

4190

UNIPROT ID:

P40925

Full Name:

malate dehydrogenase 1, NAD (soluble)

Calculated MW:

334 aa, 36 kDa

Observed MW:

36-37 kDa

Purification Method:

Protein G purification

CloneNo.:

1F9A2

Recommended Dilutions:

IF/ICC 1:50-1:500

Excitation/Emission maxima wavelengths:

493 nm / 522 nm

## Applications

Tested Applications:

IF/ICC

Species Specificity:

Human, mouse

Positive Controls:

IF/ICC : HepG2 cells,

## Background Information

MDH1 (Malate dehydrogenase, cytoplasmic) is also named as MDHA and belongs to the LDH/MDH superfamily and MDH type 2 family which catalyzes the reversible oxidation of malate to oxaloacetate, utilizing the NAD/NADH cofactor system in the citric acid cycle. It can exist as a dimer and the dimeric MDH1 is the mitochondrial isoenzyme, whereas the tetrameric MDH2 is the glycosomal isoenzyme. (PMID:10693743)

## Storage

Storage:

Store at -20°C. Avoid exposure to light. Stable for one year after shipment.

Storage Buffer:

PBS with 50% Glycerol, 0.05% Proclin300, 0.5% BSA, pH 7.3.

Aliquoting is unnecessary for -20°C storage

For technical support and original validation data for this product please contact:

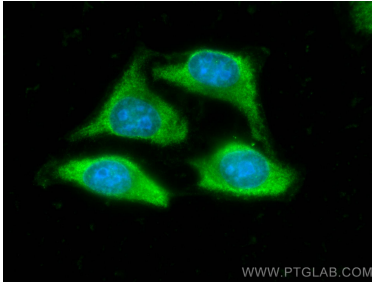
T: 4006900926

E: [Proteintech-CN@ptglab.com](mailto:Proteintech-CN@ptglab.com)

W: [ptgcn.com](http://ptgcn.com)

This product is exclusively available under Proteintech Group brand and is not available to purchase from any other manufacturer.

## Selected Validation Data



Immunofluorescent analysis of (-20°C Ethanol) fixed HepG2 cells using CoraLite® Plus 488 MDH1 antibody (CL488-66505, Clone: 1F9A2 ) at dilution of 1:200.