

For Research Use Only

CoraLite®488-conjugated PCCB Monoclonal antibody

Catalog Number: CL488-66501

Featured Product



Basic Information

Catalog Number:

CL488-66501

Size:

2000 ug/ml

Source:

Mouse

Isotype:

IgG1

Immunogen Catalog Number:

AG1608

GenBank Accession Number:

BC013768

GeneID (NCBI):

5096

UNIPROT ID:

P05166

Full Name:

propionyl Coenzyme A carboxylase,
beta polypeptide

Calculated MW:

58 kDa

Observed MW:

58 kDa

Purification Method:

Protein G purification

CloneNo.:

1A9A5

Recommended Dilutions:

IF-P 1:50-1:500

Excitation/Emission maxima
wavelengths:

491 nm / 516 nm

Applications

Tested Applications:

IF-P

Species Specificity:

human, mouse, rat, pig

Positive Controls:

IF-P: human kidney tissue,

Background Information

Storage

Storage:

Store at -20°C. Avoid exposure to light. Stable for one year after shipment.

Storage Buffer:

PBS with 50% Glycerol, 0.05% Proclin300, 0.5% BSA, pH 7.3.

Aliquoting is unnecessary for -20°C storage

For technical support and original validation data for this product please contact:

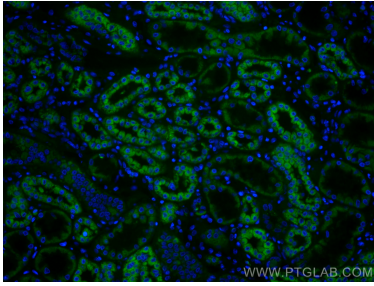
T: 4006900926

E: Proteintech-CN@ptglab.com

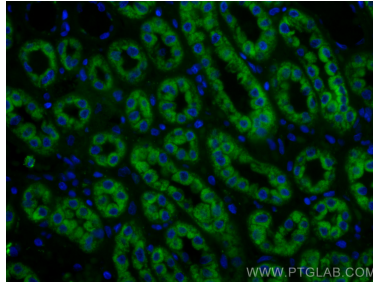
W: ptgcn.com

This product is exclusively available under Proteintech Group brand and is not available to purchase from any other manufacturer.

Selected Validation Data



Immunofluorescent analysis of (4% PFA) fixed human kidney tissue using CoraLite@488 PCCB antibody (CL488-66501, Clone: 1A9A5) at dilution of 1:200.



Immunofluorescent analysis of (4% PFA) fixed human kidney tissue using CoraLite@488 PCCB antibody (CL488-66501, Clone: 1A9A5) at dilution of 1:200.