

For Research Use Only

# CoraLite® Plus 488-conjugated TRAF6 Monoclonal antibody



Catalog Number: CL488-66498

1 Publications

## Basic Information

Catalog Number:

CL488-66498

Size:

1000 µg/ml

Source:

Mouse

Isotype:

IgG1

Immunogen Catalog Number:

AG24696

GenBank Accession Number:

BC031052

GeneID (NCBI):

7189

UNIPROT ID:

Q9Y4K3

Full Name:

TNF receptor-associated factor 6

Calculated MW:

522 aa, 60 kDa

Purification Method:

Protein G purification

CloneNo.:

1D1E1

Recommended Dilutions:

IF 1:50-1:500

Excitation/Emission maxima

wavelengths:

493 nm / 522 nm

## Applications

Tested Applications:

FC (Intra), IF/ICC

Cited Applications:

IF

Species Specificity:

Human, mouse

Cited Species:

human

Positive Controls:

IF : HeLa cells,

## Background Information

TRAF6 is a member of the TNF receptor associated factor (TRAF) protein family. TRAF6 is recognized as a signal transducer, which activates the NF- $\kappa$ B pathway in response to pro-inflammatory cytokines. TRAF6 has E3 ligase activity and is responsible for inducing Lys-63 (K63)-linked poly-ubiquitination chains, functioning together with E2 Ubc13/Uev1A complex to mediate IKK activation. TRAF6 plays a crucial role in the regulation of the innate and adaptive immune responses.

## Notable Publications

Author	Pubmed ID	Journal	Application
Da Chen	38135696	Cancer Gene Ther	IF

## Storage

Storage:

Store at -20°C. Avoid exposure to light. Stable for one year after shipment.

Storage Buffer:

PBS with 50% Glycerol, 0.05% Proclin300, 0.5% BSA, pH 7.3.

Aliquoting is unnecessary for -20°C storage

For technical support and original validation data for this product please contact:

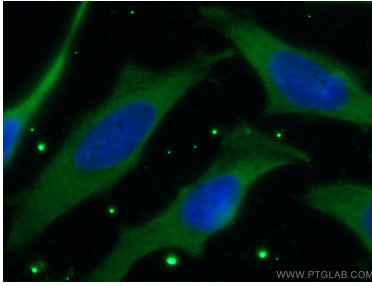
T: 4006900926

E: Proteintech-CN@ptglab.com

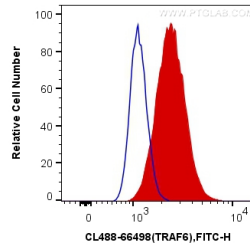
W: ptgcn.com

This product is exclusively available under Proteintech Group brand and is not available to purchase from any other manufacturer.

## Selected Validation Data



Immunofluorescent analysis of (-20°C Ethanol) fixed HeLa cells using CoraLite® Plus 488-conjugated TRAF6 antibody (CL488-66498, Clone: 1D1E1 ) at dilution of 1:100.



1X10<sup>6</sup> Jurkat cells were intracellularly stained with 0.4 ug CoraLite® Plus 488 Anti-Human TRAF6 (CL488-66498, Clone:1D1E1) (red), or 0.4 ug Mouse IgG1 Isotype Control (CL488-66360, Clone: T1F8D3F10) (blue). Cells were fixed with 4% PFA and permeabilized with Flow Cytometry Perm Buffer (PF00011-C).