

For Research Use Only

CoraLite® Plus 488-conjugated NRG1, isoform SMDF Monoclonal antibody

Catalog Number: CL488-66492

1 Publications



Basic Information

Catalog Number:

CL488-66492

Size:

1000 µg/ml

Source:

Mouse

Isotype:

IgG1

Immunogen Catalog Number:

AG0803

GenBank Accession Number:

BC007675

GeneID (NCBI):

3084

UNIPROT ID:

Q02297

Full Name:

neuregulin 1

Calculated MW:

70 kDa

Observed MW:

70 kDa

Purification Method:

Protein G purification

CloneNo.:

2C6D12

Recommended Dilutions:

IF/ICC 1:50-1:500

Excitation/Emission maxima wavelengths:

493 nm / 522 nm

Applications

Tested Applications:

IF/ICC

Cited Applications:

IF

Species Specificity:

Human, pig, mouse, rat

Positive Controls:

IF/ICC : MCF-7 cells,

Background Information

Neuregulin 1 (NRG1) is a trophic factor that has been implicated in neural development, neurotransmission, and synaptic plasticity. NRG1 has multiple isoforms that are generated by usage of different promoters and alternative splicing of a single gene. NRG1 and its receptor ErbB tyrosine kinase are expressed not only in the developing nervous system, but also in the adult brain. The antibody is specific to NRG1 isoform SMDF.

Notable Publications

Author	Pubmed ID	Journal	Application
Guanglei Hu	38184852	Cell Rep	IF

Storage

Storage:

Store at -20°C. Avoid exposure to light. Stable for one year after shipment.

Storage Buffer:

PBS with 50% Glycerol, 0.05% Proclin300, 0.5% BSA, pH 7.3.

Aliquoting is unnecessary for -20°C storage

For technical support and original validation data for this product please contact:

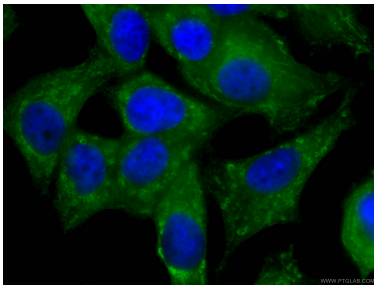
T: 4006900926

E: Proteintech-CN@ptglab.com

W: ptgcn.com

This product is exclusively available under Proteintech Group brand and is not available to purchase from any other manufacturer.

Selected Validation Data



Immunofluorescent analysis of (-20°C Ethanol) fixed MCF-7 cells using CL488-66492 (NRG1, isoform SMDF antibody) at dilution of 1:100.