

For Research Use Only

# CoraLite® Plus 488-conjugated CLTC Monoclonal antibody

Catalog Number: CL488-66487

Featured Product



## Basic Information

Catalog Number:

CL488-66487

Source:

Mouse

Isotype:

IgG1

Immunogen Catalog Number:

AG25040

GenBank Accession Number:

BC054489

GeneID (NCBI):

1213

UNIPROT ID:

Q00610

Full Name:

clathrin, heavy chain (Hc)

Calculated MW:

192 kDa

Observed MW:

170 kDa

Purification Method:

Protein G purification

CloneNo.:

1B3D7

Recommended Dilutions:

IF/ICC: 1:50-1:500

Excitation/Emission maxima wavelengths:

493 nm / 522 nm

## Applications

Tested Applications:

IF/ICC

Species Specificity:

human, mouse, rat, pig

Positive Controls:

IF/ICC : HepG2 cells, HeLa cells

## Background Information

Clathrin is the major protein of the polyhedral coat of coated pits and vesicles which entrap specific macromolecules during receptor-mediated endocytosis. The clathrin molecule has a triskelion shape. Each clathrin triskelion is composed of three identical heavy chains (CLTC) (160-190 kDa) and three light chains of two types, LCA (CLTA) and LCB (CLTB) (30-40 kDa). The heavy chain provides the structural backbone of the clathrin lattice. (PMID: 9133677)

## Storage

Storage:

Store at -20°C. Avoid exposure to light. Stable for one year after shipment.

Storage Buffer:

PBS with 50% glycerol, 0.05% Proclin300, 0.5% BSA, pH7.3

Aliquoting is unnecessary for -20°C storage

For technical support and original validation data for this product please contact:

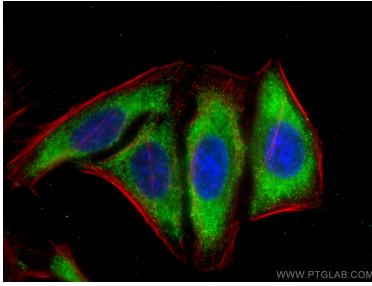
T: 4006900926

E: [Proteintech-CN@ptglab.com](mailto:Proteintech-CN@ptglab.com)

W: [ptgcn.com](http://ptgcn.com)

This product is exclusively available under Proteintech Group brand and is not available to purchase from any other manufacturer.

## Selected Validation Data



Immunofluorescent analysis of (-20°C Ethanol) fixed HepG2 cells using CoraLite® Plus 488 CLTC antibody (CL488-66487, Clone: 1B3D7 ) at dilution of 1:200, CL594-Phalloidin (red).