

For Research Use Only

# CoraLite® Plus 488-conjugated Heavy chain of Rabbit IgG Monoclonal antibody



Catalog Number: **CL488-66467**

4 Publications

## Basic Information

Catalog Number:

CL488-66467

Concentration:

1000 µg/ml

Source:

Mouse

Isotype:

IgG1

GenBank Accession Number:

GeneID (NCBI):

UNIPROT ID:

N/A

Full Name:

Purification Method:

Protein G purification

CloneNo.:

1C9A5

Recommended Dilutions:

IF/ICC 1:200-1:800

Excitation/Emission maxima wavelengths:

493 nm / 522 nm

## Applications

Tested Applications:

IF/ICC

Cited Applications:

IF

Species Specificity:

rabbit

Positive Controls:

IF/ICC : HeLa cells,

## Background Information

This antibody specifically recognizes the heavy chain of Rabbit IgG.

## Notable Publications

| Author       | Pubmed ID | Journal                      | Application |
|--------------|-----------|------------------------------|-------------|
| Yinghua Zhao | 34471099  | Signal Transduct Target Ther | IF          |
| Yanni Gao    | 36366433  | Viruses                      | IF          |
| Zixin Chen   | 31584200  | J Cell Physiol               | IF          |

## Storage

Storage:

Store at -20°C. Avoid exposure to light. Stable for one year after shipment.

Storage Buffer:

PBS with 50% Glycerol, 0.05% Proclin300, 0.5% BSA, pH 7.3.

Aliquoting is unnecessary for -20°C storage

For technical support and original validation data for this product please contact:

T: 4006900926

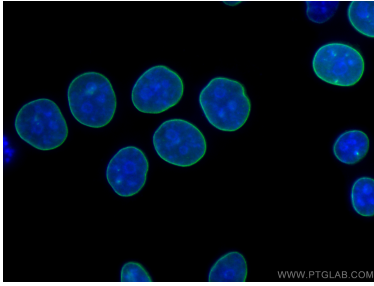
E: [Proteintech-CN@ptglab.com](mailto:Proteintech-CN@ptglab.com)

W: [ptgcn.com](http://ptgcn.com)

This product is exclusively available under Proteintech Group brand and is not available to purchase from any other manufacturer.

---

## Selected Validation Data



Immunofluorescent analysis of (-20°C Ethanol) fixed HeLa cells using the CoraLite® Plus 488-conjugated version of this antibody, CL488-66467 (Heavy chain of Rabbit IgG antibody), at dilution of 1:400.