

For Research Use Only

CoraLite® Plus 488-conjugated PEBP1 Monoclonal antibody



Catalog Number: CL488-66438

Basic Information

Catalog Number:

CL488-66438

Size:

1000 µg/ml

Source:

Mouse

Isotype:

IgG1

Immunogen Catalog Number:

AG0864

GenBank Accession Number:

BC008714

GeneID (NCBI):

5037

UNIPROT ID:

P30086

Full Name:

phosphatidylethanolamine binding
protein 1

Calculated MW:

21 kDa

Observed MW:

23-27 kDa

Purification Method:

Protein G purification

CloneNo.:

2D4D11

Recommended Dilutions:

IF 1:50-1:500

Excitation/Emission maxima
wavelengths:

493 nm / 522 nm

Applications

Tested Applications:

FC (Intra), IF/ICC

Species Specificity:

human, mouse, rat

Positive Controls:

IF : A549 cells,

Background Information

Raf kinase inhibitor protein (RKIP), also termed phosphatidylethanolamine binding protein PEBP1, was initially identified as a potent inhibitor of Raf-1/MEK/ERK, NF-κB, and G-protein-coupled receptor signaling pathways. Later RKIP has been further identified as a metastasis suppressor and its loss of expression has been reported in various cancers. Its expression has been proposed as a prognostic marker for patients diagnosed with the above cancers.

Storage

Storage:

Store at -20°C. Avoid exposure to light. Stable for one year after shipment.

Storage Buffer:

PBS with 50% Glycerol, 0.05% Proclin300, 0.5% BSA, pH 7.3.

Aliquoting is unnecessary for -20°C storage

For technical support and original validation data for this product please contact:

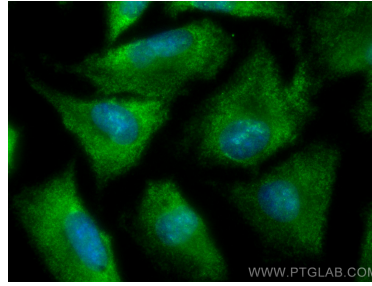
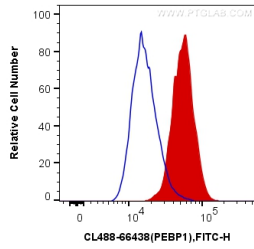
T: 4006900926

E: Proteintech-CN@ptglab.com

W: ptgcn.com

This product is exclusively available under Proteintech Group brand and is not available to purchase from any other manufacturer.

Selected Validation Data



1X10⁶ PC-12 cells were intracellularly stained with 0.4 ug CoraLite® Plus 488 Anti-Human PEBP1 (CL488-66438, Clone:2D4D11) (red), or 0.4 ug Mouse IgG1 Isotype Control (CL488-66360, Clone: T1F8D3F10) (blue). Cells were fixed with 4% PFA and permeabilized with Flow Cytometry Perm Buffer (PF00011-C).

Immunofluorescent analysis of (-20°C Ethanol) fixed A549 cells using CoraLite® Plus 488 PEBP1 antibody (CL488-66438, Clone: 2D4D11) at dilution of 1:200.