

For Research Use Only

CoraLite® Plus 488-conjugated CDC37 Monoclonal antibody



Catalog Number:CL488-66420

Basic Information

Catalog Number:

CL488-66420

Size:

2000 µg/ml

Source:

Mouse

Isotype:

IgG2a

Immunogen Catalog Number:

AG0267

GenBank Accession Number:

BC000083

GeneID (NCBI):

11140

UNIPROT ID:

Q16543

Full Name:

cell division cycle 37 homolog (S. cerevisiae)

Calculated MW:

44 kDa

Observed MW:

44 kDa

Purification Method:

Protein A purification

CloneNo.:

1C2A6

Recommended Dilutions:

WB 1:500-1:1000

Excitation/Emission maxima
wavelengths:

493 nm / 522 nm

Applications

Tested Applications:

WB

Species Specificity:

human, mouse, rat

Positive Controls:

WB : HEK-293 cells, Jurkat cells, MCF-7 cells

Background Information

CDC(cell division control) family of proteins are regulatory proteins involved in the processes of cell cycle and proliferation. CDC37, migrated as a protein of 50 kDa in SDS PAGE, is a co-chaperone protein that recruits several immature client kinases to Hsp90 for proper folding. It functions in association with Hsp90, although little is known of its mechanism of action or where it fits into a folding pathway involving other Hsp90 cochaperones. CDC37 up-regulation is a common early event in some localized human cancers. But, the effect of CDC37 dysregulation in human cells is unclear.

Storage

Storage:

Store at -20°C. Avoid exposure to light. Stable for one year after shipment.

Storage Buffer:

PBS with 50% Glycerol, 0.05% Proclin300, 0.5% BSA, pH 7.3.

Aliquoting is unnecessary for -20°C storage

For technical support and original validation data for this product please contact:

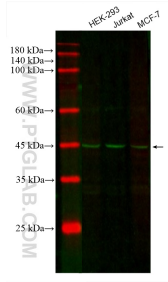
T: 4006900926

E: Proteintech-CN@ptglab.com

W: ptgcn.com

This product is exclusively available under Proteintech Group brand and is not available to purchase from any other manufacturer.

Selected Validation Data



Various lysates were subjected to SDS PAGE followed by western blot with CL488-66420 (CDC37 antibody) at dilution of 1:500 incubated at room temperature for 1.5 hours.