

# CoraLite® Plus 488-conjugated Calsequestrin 2 Monoclonal antibody

Catalog Number: **CL488-66419**

## Basic Information

**Catalog Number:**

CL488-66419

**Size:**

1000 µg/ml

**Source:**

Mouse

**Isotype:**

IgG2a

**Immunogen Catalog Number:**

AG13246

**GenBank Accession Number:**

BC022288

**GeneID (NCBI):**

845

**UNIPROT ID:**

O14958

**Full Name:**

calsequestrin 2 (cardiac muscle)

**Calculated MW:**

46 kDa

**Observed MW:**

50 kDa

**Purification Method:**

Protein A purification

**CloneNo.:**

1C10A1

**Recommended Dilutions:**

IF-P 1:50-1:500

**Excitation/Emission maxima  
wavelengths:**

493 nm / 522 nm

## Applications

**Tested Applications:**

IF-P

**Species Specificity:**

human, rat, pig, mouse

**Positive Controls:**

IF-P : mouse heart tissue,

## Background Information

Calsequestrin (CASQ) is a Ca<sup>2+</sup>-binding protein present primarily in junctional sarcoplasmic reticulum of skeletal and cardiac muscle; the cardiac form (CASQ2) is encoded by a separate gene. The primary role of CASQ2 is buffering of the sarcoplasmic reticulum Ca<sup>2+</sup> ions, but another role for CASQ2 has emerged recently: CASQ2 regulates the open probability of ryanodine receptor 2 (RyR2). Mutations in CASQ2 cause stress-induced polymorphic ventricular tachycardia, also referred to as catecholaminergic polymorphic ventricular tachycardia 2 (CPVT2), a disease characterized by bidirectional ventricular tachycardia that may lead to cardiac arrest.

## Storage

**Storage:**

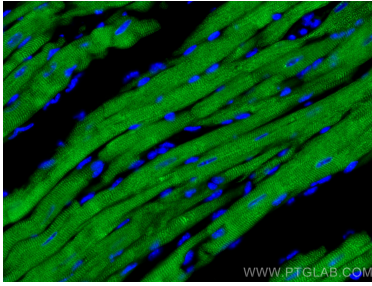
Store at -20°C. Avoid exposure to light.

**Storage Buffer:**

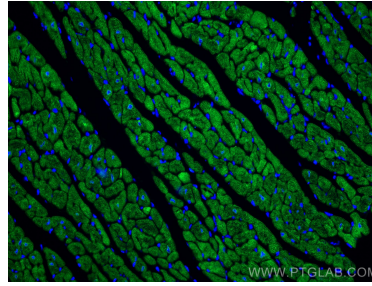
PBS with 50% Glycerol, 0.05% Proclin300, 0.5% BSA, pH 7.3.

Aliquoting is unnecessary for -20°C storage

## Selected Validation Data



Immunofluorescent analysis of (4% PFA) fixed mouse heart tissue using CoraLite® Plus 488 Calsequestrin 2 antibody (CL488-66419, Clone: 1C10A1 ) at dilution of 1:200.



Immunofluorescent analysis of (4% PFA) fixed mouse heart tissue using CoraLite® Plus 488 Calsequestrin 2 antibody (CL488-66419, Clone: 1C10A1 ) at dilution of 1:200.