

CoraLite® Plus 488-conjugated LAP3

Monoclonal antibody

Catalog Number: **CL488-66417**

Basic Information

Catalog Number:

CL488-66417

Size:

1000 µg/ml

Source:

Mouse

Isotype:

IgG1

Immunogen Catalog Number:

AG6300

GenBank Accession Number:

BC065564

GeneID (NCBI):

51056

UNIPROT ID:

P28838

Full Name:

leucine aminopeptidase 3

Calculated MW:

56 kDa

Observed MW:

56 kDa

Purification Method:

Protein G purification

CloneNo.:

1B11B8

Recommended Dilutions:

IF/ICC 1:50-1:500

Excitation/Emission maxima wavelengths:

493 nm / 522 nm

Applications

Tested Applications:

IF/ICC

Species Specificity:

human, mouse, rat, pig

Positive Controls:

IF/ICC : HeLa cells,

Background Information

LAP3 (Leucine aminopeptidase 3) is also named as LAPEP, PEPS (peptidase S) and belongs to the peptidase M17 family. It can catalyze the removal of unsubstituted N-terminal amino-acids from various peptides and be presumably involved in the processing and regular turnover of intracellular proteins. PEPS is found in a wide variety of tissues and cultured cells but not in red cells and skin. The enzyme can utilize several di-, tri-, and tetrapeptides as substrates and is the slowest migrating of the peptidases after electrophoresis (PMID:689684). LAP3 has two isoforms with MW of 52 and 56 kDa.

Storage

Storage:

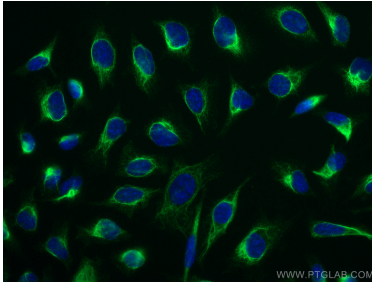
Store at -20°C. Avoid exposure to light. Stable for one year after shipment.

Storage Buffer:

PBS with 50% Glycerol, 0.05% Proclin300, 0.5% BSA, pH 7.3.

Aliquoting is unnecessary for -20°C storage

Selected Validation Data



Immunofluorescent analysis of (-20°C Methanol) fixed HeLa cells using Coralite® 488 LAP3 antibody (CL488-66417, Clone: 1B11B8) at dilution of 1:100.