

CoraLite® Plus 488-conjugated SOX2 Monoclonal antibody

Catalog Number: **CL488-66411**

Basic Information

Catalog Number: CL488-66411	GenBank Accession Number: BC013923	Purification Method: Protein G purification
Size: 1000 µg/ml	GeneID (NCBI): 6657	CloneNo.: 4B9B10
Source: Mouse	UNIPROT ID: P48431	Recommended Dilutions: IF-P 1:50-1:500
Isotype: IgG1	Full Name: SRY (sex determining region Y)-box 2	Excitation/Emission maxima wavelengths: 493 nm / 522 nm
Immunogen Catalog Number: AG13635	Calculated MW: 34 kDa	
	Observed MW: 34-40 kDa	

Applications

Tested Applications: IF-P	Positive Controls: IF-P : mouse brain tissue,
Species Specificity: human, pig, mouse	

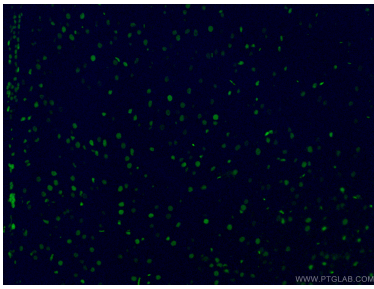
Background Information

Sox2, also known as SRY (sex determining region Y)-box 2, is a transcription factor essential for maintaining self-renewal of undifferentiated ES cells and is one of the key transcription factors used to reprogram mouse and human fibroblasts to a pluripotent state. Sox2 expressed in undifferentiated pluripotent stem cells and germ cells during development. This antibody is raised against an internal region of human SOX2. And the antibody is conjugated with CL488, Ex/Em 488 nm/515 nm.

Storage

Storage:
Store at -20°C. Avoid exposure to light. Stable for one year after shipment.
Storage Buffer:
PBS with 50% Glycerol, 0.05% Proclin300, 0.5% BSA, pH 7.3.
Aliquoting is unnecessary for -20°C storage

Selected Validation Data



Immunofluorescent analysis of (4% PFA) fixed mouse brain tissue using CL488-66411 (SOX2 antibody) at dilution of 1:50.