

For Research Use Only

CoraLite® Plus 488-conjugated PSMB10 Monoclonal antibody

Catalog Number:CL488-66403



Basic Information

Catalog Number:

CL488-66403

Source:

Mouse

Isotype:

IgG2a

Immunogen Catalog Number:

AG8835

GenBank Accession Number:

BC017198

GeneID (NCBI):

5699

UNIPROT ID:

P40306

Full Name:

proteasome (prosome, macropain) subunit, beta type, 10

Calculated MW:

273 aa, 29 kDa

Observed MW:

28 kDa

Purification Method:

Protein A purification

CloneNo.:

1G8C1

Recommended Dilutions:

IF/ICC: 1:50-1:500

Excitation/Emission maxima

wavelengths:

493 nm / 522 nm

Applications

Tested Applications:

IF/ICC

Species Specificity:

human, mouse, rat, pig

Positive Controls:

IF/ICC : Raji cells,

Background Information

SMB10(Proteasome subunit beta type-10) is also named as LMP10, MECL1.It belongs to the peptidase T1B family and is a multicatalytic proteinase complex which is characterized by its ability to cleave peptides with Arg, Phe, Tyr, Leu, and Glu adjacent to the leaving group at neutral or slightly basic pH.

Storage

Storage:

Store at -20°C. Avoid exposure to light. Stable for one year after shipment.

Storage Buffer:

PBS with 50% glycerol, 0.05% Proclin300, 0.5% BSA, pH7.3

Aliquoting is unnecessary for -20°C storage

For technical support and original validation data for this product please contact:

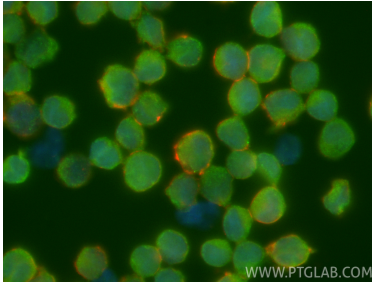
T: 4006900926

E: Proteintech-CN@ptglab.com

W: ptgcn.com

This product is exclusively available under Proteintech Group brand and is not available to purchase from any other manufacturer.

Selected Validation Data



Immunofluorescent analysis of (4% PFA) fixed Raji cells using CoraLite® Plus 488 PSMB10 antibody (CL488-66403, Clone: 1G8C1) at dilution of 1:200, CL594-phalloidin (red).