

# CoraLite® Plus 488-conjugated Plasminogen Monoclonal antibody

Catalog Number: **CL488-66399**

## Basic Information

**Catalog Number:**

CL488-66399

**Size:**

1000 µg/ml

**Source:**

Mouse

**Isotype:**

IgG1

**Immunogen Catalog Number:**

AG9938

**GenBank Accession Number:**

BC060513

**GeneID (NCBI):**

5340

**UNIPROT ID:**

P00747

**Full Name:**

plasminogen

**Calculated MW:**

810 aa, 91 kDa

**Observed MW:**

105 kDa

**Purification Method:**

Protein G purification

**CloneNo.:**

1F6A11

**Recommended Dilutions:**

IF-P 1:50-1:500

IF/ICC 1:50-1:500

**Excitation/Emission maxima wavelengths:**

493 nm / 522 nm

## Applications

**Tested Applications:**

IF/ICC, IF-P

**Species Specificity:**

human

**Positive Controls:**

IF-P : human liver cancer tissue,

IF/ICC : HepG2 cells,

## Background Information

Plasminogen is a secreted blood zymogen that is activated by proteolysis and converted to plasmin and angiostatin. Plasminogen plays an important role in fibrinolysis as well as wound healing, cell migration, tissue modeling and angiogenesis. Plasminogen is synthesized in the liver, and it circulates in the blood, with a half-life of 2.2 days. Plasminogen is the precursor of plasmin, which lyses fibrin clots to fibrin degradation products (FDP) and D-dimer; the conversion to active protease is mediated by tissue-type (tPA) and urokinase-type (uPA) plasminogen activators. Defects in plasminogen are likely a cause of thrombophilia and ligneous conjunctivitis.

## Storage

**Storage:**

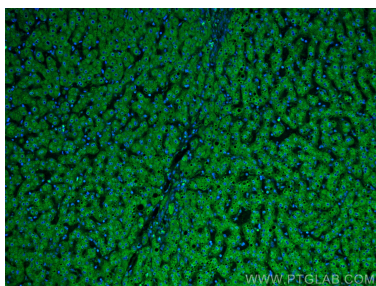
Store at -20°C. Avoid exposure to light.

**Storage Buffer:**

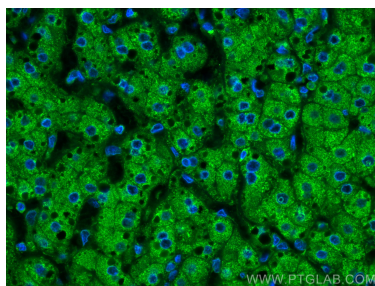
PBS with 50% Glycerol, 0.05% Proclin300, 0.5% BSA, pH 7.3.

Aliquoting is unnecessary for -20°C storage

## Selected Validation Data



Immunofluorescent analysis of (4% PFA) fixed human liver cancer tissue using CoraLite® Plus 488 Plasminogen antibody (CL488-66399, Clone: 1F6A11 ) at dilution of 1:200.



Immunofluorescent analysis of (4% PFA) fixed human liver cancer tissue using CoraLite® Plus 488 Plasminogen antibody (CL488-66399, Clone: 1F6A11 ) at dilution of 1:200.



Immunofluorescent analysis of (-20°C Ethanol) fixed HepG2 cells using CoraLite® Plus 488 Plasminogen antibody (CL488-66399, Clone: 1F6A11 ) at dilution of 1:200.