

For Research Use Only

# CoraLite® Plus 488-conjugated PLA2G1B Monoclonal antibody



Catalog Number: **CL488-66397**

## Basic Information

<b>Catalog Number:</b> CL488-66397	<b>GenBank Accession Number:</b> BC005386	<b>Purification Method:</b> Protein A purification
<b>Size:</b> 1000 µg/ml	<b>GeneID (NCBI):</b> 5319	<b>CloneNo.:</b> 1F2C10
<b>Source:</b> Mouse	<b>UNIPROT ID:</b> P04054	<b>Recommended Dilutions:</b> WB 1:500-1:1000
<b>Isotype:</b> IgG2a	<b>Full Name:</b> phospholipase A2, group IB (pancreas)	<b>Excitation/Emission maxima wavelengths:</b> 493 nm / 522 nm
<b>Immunogen Catalog Number:</b> AG8812	<b>Calculated MW:</b> 70aa, 8 kDa; 148aa, 16 kDa	
	<b>Observed MW:</b> 16 kDa	

## Applications

<b>Tested Applications:</b> WB	<b>Positive Controls:</b> WB : pig pancreas tissue,
<b>Species Specificity:</b> human, pig	

## Background Information

### Storage

**Storage:**  
Store at -20°C. Avoid exposure to light. Stable for one year after shipment.

**Storage Buffer:**  
PBS with 50% Glycerol, 0.05% Proclin300, 0.5% BSA, pH 7.3.

Aliquoting is unnecessary for -20°C storage

For technical support and original validation data for this product please contact:

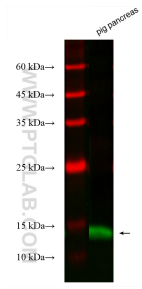
T: 4006900926

E: [Proteintech-CN@ptglab.com](mailto:Proteintech-CN@ptglab.com)

W: [ptgcn.com](http://ptgcn.com)

This product is exclusively available under Proteintech Group brand and is not available to purchase from any other manufacturer.

## Selected Validation Data



Various lysates were subjected to SDS PAGE followed by western blot with CL488-66397 (PLA2G1B antibody) at dilution of 1:500 incubated at room temperature for 1.5 hours.