

# CoraLite® Plus 488-conjugated NF-M

## Monoclonal antibody

Catalog Number: **CL488-66396**

### Basic Information

**Catalog Number:**

CL488-66396

**Size:**

1000 µg/ml

**Source:**

Mouse

**Isotype:**

IgG1

**Immunogen Catalog Number:**

AG22709

**GenBank Accession Number:**

BC002421

**GeneID (NCBI):**

4741

**UNIPROT ID:**

P07197

**Full Name:**

neurofilament, medium polypeptide

**Calculated MW:**

102 kDa

**Observed MW:**

140 kDa

**Purification Method:**

Protein G purification

**CloneNo.:**

2E3B12

**Excitation/Emission maxima wavelengths:**

493 nm / 522 nm

### Applications

**Tested Applications:**

FC (Intra)

**Species Specificity:**

human, mouse, rat

### Background Information

NEFM, also named as NEF3 and NFM, belongs to the intermediate filament family. Neurofilaments are the 10 nm intermediate filaments found specifically in neurons. They are a major component of the cell's cytoskeleton, and provide support for normal axonal radial growth. Neurofilaments usually contain three intermediate filament proteins: L, M, and H which are involved in the maintenance of neuronal caliber. The names given to the three major neurofilament subunits are based upon the apparent molecular weight of the mammalian subunits on SDS-PAGE: NF-L, 65-68 kDa; NF-M, 140-160 kDa and NF-H, 200-220 kDa.

### Storage

**Storage:**

Store at -20°C. Avoid exposure to light. Stable for one year after shipment.

**Storage Buffer:**

PBS with 50% Glycerol, 0.05% Proclin300, 0.5% BSA, pH 7.3.

Aliquoting is unnecessary for -20°C storage

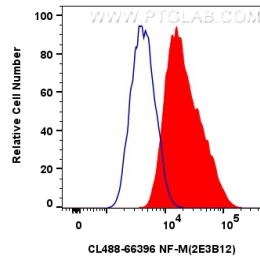
For technical support and original validation data for this product please contact:

T: 4006900926

E: [Proteintech-CN@ptglab.com](mailto:Proteintech-CN@ptglab.com)W: [ptgcn.com](http://ptgcn.com)

This product is exclusively available under Proteintech Group brand and is not available to purchase from any other manufacturer.

## Selected Validation Data



1x10<sup>6</sup> PC-12 cells were intracellularly stained with 0.8  $\mu$ g CoraLite® Plus 488 Anti-Human NF-M (CL488-66396, Clone:2E3B12)(red), or 0.8  $\mu$ g CoraLite® Plus 488 Mouse IgG1 Isotype Control (1F8D3) (CL488-66360-1, Clone: 1F8D3) (blue). Cells were fixed with 4% PFA and permeabilized with Flow Cytometry Perm Buffer (PF00011-C).