

For Research Use Only

CoraLite® Plus 488-conjugated Cardiac Troponin I Monoclonal antibody

Catalog Number: CL488-66376

1 Publications



Basic Information

Catalog Number:

CL488-66376

Size:

1000 µg/ml

Source:

Mouse

Isotype:

IgG1

Immunogen Catalog Number:

AG16758

GenBank Accession Number:

BC096165

GeneID (NCBI):

7137

UNIPROT ID:

P19429

Full Name:

troponin I type 3 (cardiac)

Calculated MW:

210 aa, 24 kDa

Observed MW:

26-28 kDa

Purification Method:

Protein G purification

CloneNo.:

1D5D6

Recommended Dilutions:

IF-P 1:50-1:500

Excitation/Emission maxima wavelengths:

493 nm / 522 nm

Applications

Tested Applications:

IF-P

Cited Applications:

IF

Species Specificity:

human, mouse, rat

Cited Species:

mouse

Positive Controls:

IF-P: mouse heart tissue,

Background Information

Troponin I (TnI) is the inhibitory subunit of troponin, the structural protein involved in the regulation of striated muscle contraction. Cardiac Troponin I (cTnI) is produced by cardiac muscle. Two other TnI isoforms (slow sTnI and fast sTnI) are produced by slow-twitch and fast-twitch skeletal muscles, respectively. cTnI has been considered as one of the most specific and sensitive markers of myocardial damage like acute myocardial infarction (AMI) for decades. Detection of cTnI in serum is widely accepted as a diagnostic tool in acute coronary syndromes. This antibody is specific to cTnI, but not cross-react with skeletal TnI.

Notable Publications

Author	Pubmed ID	Journal	Application
Vanessa J Lowe	39374886	Pharmacol Res	IF

Storage

Storage:

Store at -20°C. Avoid exposure to light. Stable for one year after shipment.

Storage Buffer:

PBS with 50% Glycerol, 0.05% Proclin300, 0.5% BSA, pH 7.3.

Aliquoting is unnecessary for -20°C storage

For technical support and original validation data for this product please contact:

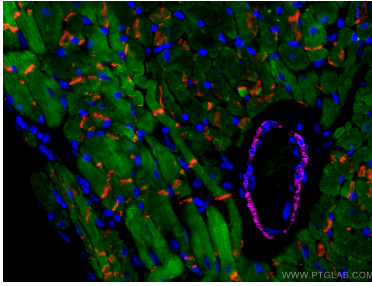
T: 4006900926

E: Proteintech-CN@ptglab.com

W: ptgcn.com

This product is exclusively available under Proteintech Group brand and is not available to purchase from any other manufacturer.

Selected Validation Data



Immunofluorescent analysis of (4% PFA) fixed mouse heart tissue using CoraLite® Plus 488 Cardiac Troponin I antibody (CL488-66376, Clone: 1D5D6) at dilution of 1:200, CoraLite® Plus 647 smooth muscle actin specific antibody (CL647-67735, Clone: 1E9A11, magenta), CoraLite® 594 N-cadherin antibody (CL594-22018, red). DAPI (blue).