

For Research Use Only

# CoraLite® Plus 488-conjugated SKAP2 Monoclonal antibody



Catalog Number: CL488-66367

## Basic Information

<b>Catalog Number:</b> CL488-66367	<b>GenBank Accession Number:</b> BC036044	<b>Purification Method:</b> Protein G purification
<b>Size:</b> 1000 µg/ml	<b>GeneID (NCBI):</b> 8935	<b>CloneNo.:</b> 2G3G9
<b>Source:</b> Mouse	<b>UNIPROT ID:</b> O75563	<b>Recommended Dilutions:</b> IF 1:50-1:500
<b>Isotype:</b> IgG1	<b>Full Name:</b> src kinase associated phosphoprotein 2	<b>Excitation/Emission maxima wavelengths:</b> 493 nm / 522 nm
<b>Immunogen Catalog Number:</b> AG3615	<b>Calculated MW:</b> 41 kDa	
	<b>Observed MW:</b> 55 kDa	

## Applications

<b>Tested Applications:</b> IF/ICC, FC (Intra)	<b>Positive Controls:</b> IF : NIH/3T3 cells,
<b>Species Specificity:</b> human, pig, rat, mouse	

## Background Information

SKAP2 (src kinase associated phosphoprotein 2), also named PRAP, contains PH domain and SH3 domain. It is localized in cytoplasm and was expressed in ubiquitously in various tissues including lung, skeletal muscle, and spleen, but not detectable in thymus and T cell lymphoma cells. SKAP2 may negatively regulate alpha-synuclein phosphorylation following cell stress. SKAP2 may be involved in B-cell and macrophage adhesion processes by coupling the B-cell receptor (BCR) to integrin activation.

## Storage

**Storage:**  
Store at -20°C. Avoid exposure to light. Stable for one year after shipment.  
**Storage Buffer:**  
PBS with 50% Glycerol, 0.05% Proclin300, 0.5% BSA, pH 7.3.  
Aliquoting is unnecessary for -20°C storage

For technical support and original validation data for this product please contact:

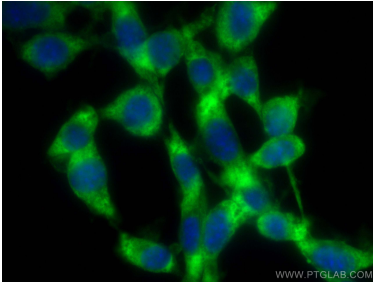
T: 4006900926

E: [Proteintech-CN@ptglab.com](mailto:Proteintech-CN@ptglab.com)

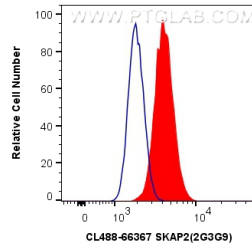
W: [ptgcn.com](http://ptgcn.com)

This product is exclusively available under Proteintech Group brand and is not available to purchase from any other manufacturer.

## Selected Validation Data



Immunofluorescent analysis of (-20°C Ethanol) fixed NIH/3T3 cells using CoraLite® Plus 488 SKAP2 antibody (CL488-66367, Clone: 2G3G9) at dilution of 1:200.



1X10<sup>6</sup> NIH/3T3 cells were intracellularly stained with 0.8 ug CoraLite® Plus 488 Anti-Human SKAP2 (CL488-66367, Clone:2G3G9) (red), or 0.8 ug Control Antibody. Cells were fixed with 4% PFA and permeabilized with Flow Cytometry Perm Buffer (PF00011-C).