

For Research Use Only

# CoraLite® Plus 488 Mouse IgG2a isotype control (11A1B2)



Catalog Number: CL488-66360-2

## Basic Information

Catalog Number:

CL488-66360-2

GenBank Accession Number:

GeneID (NCBI):

Purification Method:

Protein A purification

Size:

100ug, 200 µg/ml

Full Name:

CloneNo.:

11A1B2

Source:

Mouse

Excitation/Emission maxima wavelengths:

493 nm / 522 nm

Isotype:

IgG2a

## Applications

Tested Applications:

FC

Species Specificity:

Megathura crenulata

## Background Information

This antibody is used as the isotype control of mouse IgG2a. It can be used as the isotype control in Flow Cytometry and other experiments. The immunogen of this antibody is Keyhole Limpet Hemocyanin (KLH).

## Storage

Storage:

Store at 2-8°C. Avoid exposure to light. Stable for one year after shipment.

Storage Buffer:

PBS with 0.1% sodium azide and 0.5% BSA.

For technical support and original validation data for this product please contact:

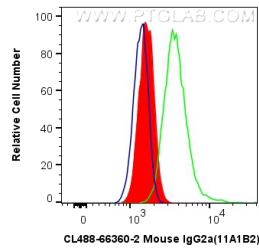
T: 4006900926

E: [Proteintech-CN@ptglab.com](mailto:Proteintech-CN@ptglab.com)

W: [ptgcn.com](http://ptgcn.com)

This product is exclusively available under Proteintech Group brand and is not available to purchase from any other manufacturer.

## Selected Validation Data



1X10<sup>6</sup> HeLa cells were intracellularly stained with 0.4 ug CoraLite® Plus 488 Anti-Mouse IgG2a isotype control (CL488-66360-2, Clone:11A1B2) (red), or 0.4 ug CoraLite® Plus 488-conjugated CD74 Monoclonal antibody (green) or unstained (blue). Cells were fixed with 4% PFA and permeabilized with Flow Cytometry Perm Buffer (PF00011-C).