

For Research Use Only

CoraLite® Plus 488 Mouse IgG1 Isotype Control (1F8D3)



Catalog Number: CL488-66360-1

Basic Information

Catalog Number:

CL488-66360-1

Size:

100ug, 200 µg/ml

Source:

Mouse

Isotype:

IgG1

GenBank Accession Number:

GeneID (NCBI):

Full Name:

Purification Method:

Protein G purification

CloneNo.:

1F8D3

Excitation/Emission maxima
wavelengths:

493 nm / 522 nm

Applications

Tested Applications:

FC

Species Specificity:

Megathura crenulata

Background Information

This antibody is used as the isotype control of mouse IgG1 (Kappa). It can be used as the isotype control in Flow Cytometry, Immuno-Precipitation and other experiments. The immunogen of this antibody is Keyhole Limpet Hemocyanin (KLH).

Storage

Storage:

Store at 2-8°C. Avoid exposure to light. Stable for one year after shipment.

Storage Buffer:

PBS with 0.09% sodium azide and 0.5% BSA.

For technical support and original validation data for this product please contact:

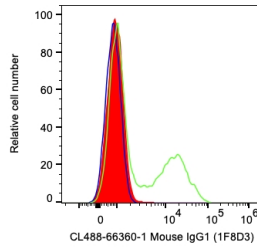
T: 4006900926

E: Proteintech-CN@ptglab.com

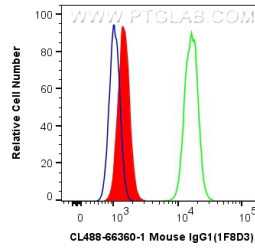
W: ptgcn.com

This product is exclusively available under Proteintech Group brand and is not available to purchase from any other manufacturer.

Selected Validation Data



1X10⁶ human PBMCs were surface stained with 0.2 ug CoraLite® Plus 488 Anti-IgG1 Isotype Control (CL488-66360-1, Clone:1F8D3) (red), CL488 Anti-Human CD35 (green), or unstained (blue). Cells were not fixed. Lymphocytes were gated.



1X10⁶ A431 cells were intracellularly stained with 0.4 ug CoraLite® Plus 488 Anti-Mouse IgG1 isotype control (CL488-66360-1, Clone: 1F8D3) (red), or 0.4 ug CoraLite® Plus 488 Anti-Human FKBP8 (CL488-66690, Clone: 1C1G12) (green), or unstained (blue). Cells were fixed with 4% PFA and permeabilized with Flow Cytometry Perm Buffer (PF00011-C).