

For Research Use Only

CoraLite® Plus 488-conjugated POMC Monoclonal antibody



Catalog Number: CL488-66358

1 Publications

Basic Information

Catalog Number:

CL488-66358

Size:

2467 µg/ml

Source:

Mouse

Isotype:

IgG1

Immunogen Catalog Number:

AG17311

GenBank Accession Number:

BC065832

GeneID (NCBI):

5443

UNIPROT ID:

P01189

Full Name:

proopiomelanocortin

Calculated MW:

267 aa, 29 kDa

Purification Method:

Protein G purification

CloneNo.:

3C12C7

Recommended Dilutions:

IF/ICC 1:50-1:500

Excitation/Emission maxima wavelengths:

493 nm / 522 nm

Applications

Tested Applications:

IF/ICC

Cited Applications:

IF

Species Specificity:

human, rat, mouse

Cited Species:

human

Positive Controls:

IF/ICC : HeLa cells,

Background Information

Pro-opiomelanocortin (POMC) is a prohormone that encodes multiple smaller peptide hormones within its structure. POMC plays important roles in many pathological and physiological processes, including regulating energy metabolism, immune reactions, and sexual functions. POMC expression differs quantitatively and qualitatively among most normal tissues. The large molecule of POMC is the source of several important biologically active substances. POMC can be cleaved enzymatically into the following peptides: d NPP, γ -MSH, ACTH, α -MSH, CLIP, Lipotropin β , Lipotropin γ , β -MSH, β -endorphin and Met-enkephalin.

Notable Publications

Author	Pubmed ID	Journal	Application
Heng Sun	38027207	Front Endocrinol (Lausanne)	IF

Storage

Storage:

Store at -20°C. Avoid exposure to light. Stable for one year after shipment.

Storage Buffer:

PBS with 50% Glycerol, 0.05% Proclin300, 0.5% BSA, pH 7.3.

Aliquoting is unnecessary for -20°C storage

For technical support and original validation data for this product please contact:

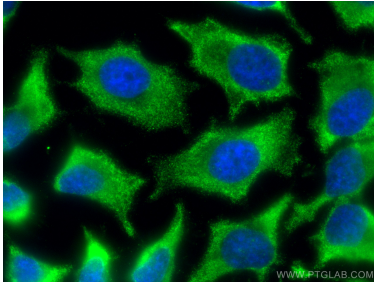
T: 4006900926

E: Proteintech-CN@ptglab.com

W: ptgcn.com

This product is exclusively available under Proteintech Group brand and is not available to purchase from any other manufacturer.

Selected Validation Data



Immunofluorescent analysis of (-20°C Ethanol) fixed HeLa cells using CoraLite® Plus 488 POMC antibody (CL488-66358, Clone: 3C12C7) at dilution of 1:200.