

# CoraLite® Plus 488-conjugated CAPRIN1 Monoclonal antibody

Catalog Number: **CL488-66352**

## Basic Information

<b>Catalog Number:</b> CL488-66352	<b>GenBank Accession Number:</b> BC001731	<b>Purification Method:</b> Protein G purification
<b>Size:</b> 1000 µg/ml	<b>GeneID (NCBI):</b> 4076	<b>CloneNo.:</b> 6B10F11
<b>Source:</b> Mouse	<b>UNIPROT ID:</b> Q14444	<b>Recommended Dilutions:</b> IF/ICC 1:50-1:500
<b>Isotype:</b> IgG1	<b>Full Name:</b> cell cycle associated protein 1	<b>Excitation/Emission maxima wavelengths:</b> 493 nm / 522 nm
<b>Immunogen Catalog Number:</b> AG7413	<b>Calculated MW:</b> 78 kDa	
	<b>Observed MW:</b> 116 kDa	

## Applications

<b>Tested Applications:</b> IF/ICC, FC (Intra)	<b>Positive Controls:</b> IF/ICC : HeLa cells,
<b>Species Specificity:</b> human, mouse, rat	

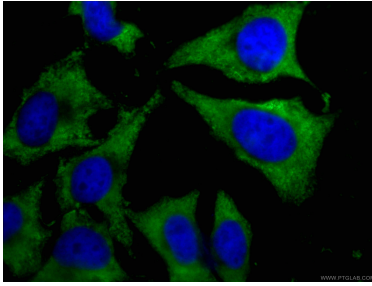
## Background Information

CAPRIN1(Caprin-1) is a cytoplasmic phosphoprotein which may regulate the transport and translation of mRNAs of proteins involved in synaptic plasticity in neurons and cell proliferation and migration in multiple cell types. Its levels, except in the brain, are tightly correlated with cellular proliferation. Suppression of expression of human Caprin-1 resulted in slowing of the proliferation rate, which suggests its essential for normal cellular proliferation.

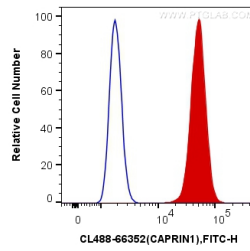
## Storage

**Storage:**  
Store at -20°C. Avoid exposure to light. Stable for one year after shipment.  
**Storage Buffer:**  
PBS with 50% Glycerol, 0.05% Proclin300, 0.5% BSA, pH 7.3.  
**Aliquoting is unnecessary for -20°C storage**

## Selected Validation Data



Immunofluorescent analysis of (-20°C Ethanol) fixed HeLa cells using CL488-66352 (CAPRIN1 antibody) at dilution of 1:100.



1X10<sup>6</sup> NIH/3T3 cells were intracellularly stained with 0.4 ug CoraLite® Plus 488 Anti-Human CAPRIN1 (CL488-66352, Clone:6B10F11) (red), or 0.4 ug Mouse IgG1 Isotype Control (CL488-66360, Clone: T1F8D3F10) (blue). Cells were fixed with 4% PFA and permeabilized with Flow Cytometry Perm Buffer (PF00011-C).