

CoraLite® Plus 488-conjugated SFRP2 Monoclonal antibody

Catalog Number: **CL488-66328**

Basic Information

Catalog Number:

CL488-66328

Size:

1000 µg/ml

Source:

Mouse

Isotype:

IgG1

Immunogen Catalog Number:

AG18840

GenBank Accession Number:

BC008666

GeneID (NCBI):

6423

UNIPROT ID:

Q96HF1

Full Name:

secreted frizzled-related protein 2

Calculated MW:

295 aa, 34 kDa

Observed MW:

38 kDa

Purification Method:

Protein G purification

CloneNo.:

1F3A1

Recommended Dilutions:

IF/ICC 1:50-1:500

**Excitation/Emission maxima
wavelengths:**

493 nm / 522 nm

Applications

Tested Applications:

IF/ICC

Species Specificity:

human, rat

Positive Controls:

IF/ICC : SH-SY5Y cells,

Background Information

Secreted frizzled-related protein 2 (Sfrp2) is a secreted glycoprotein molecule containing an N terminal cysteine-rich domain, which is typically 30-50% identical to the putative Wnt-binding site of the frizzled receptor, and a C terminal heparin-binding domain with weak homology to netrins. It has been implicated in diverse cellular processes, including embryogenesis, regulation of cell apoptosis, and cell differentiation. Methylation of this gene is a potential marker for the presence of colorectal cancer.

Storage

Storage:

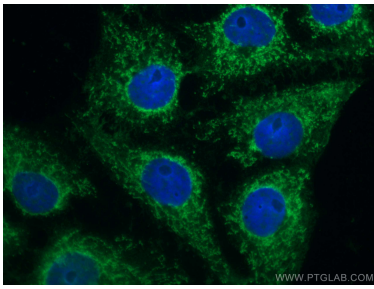
Store at -20°C. Avoid exposure to light. Stable for one year after shipment.

Storage Buffer:

PBS with 50% Glycerol, 0.05% Proclin300, 0.5% BSA, pH 7.3.

Aliquoting is unnecessary for -20°C storage

Selected Validation Data



Immunofluorescent analysis of (-20°C Ethanol) fixed SH-SY5Y cells using CL488-66328 (SFRP2 antibody) at dilution of 1:100.