

For Research Use Only

CoraLite® Plus 488-conjugated TRAF3 Monoclonal antibody

Catalog Number: CL488-66310

Featured Product

1 Publications



Basic Information

Catalog Number:

CL488-66310

Concentration:

1000 µg/ml

Source:

Mouse

Isotype:

IgG2a

Immunogen Catalog Number:

AG12185

GenBank Accession Number:

BC075087

GeneID (NCBI):

7187

UNIPROT ID:

Q13114

Full Name:

TNF receptor-associated factor 3

Calculated MW:

568 aa, 64 kDa

Purification Method:

Protein A purification

CloneNo.:

1E3F4

Recommended Dilutions:

IF/ICC 1:50-1:500

Excitation/Emission maxima wavelengths:

493 nm / 522 nm

Applications

Tested Applications:

IF/ICC

Species Specificity:

human, mouse

Positive Controls:

IF/ICC : HeLa cells,

Background Information

TNF receptor-associated factor 3 (TRAF3) has many alternative names including CAP-1, CD40 receptor-associated factor 1 (CRAF1), CD40-binding protein (CD40BP) and LMP1-associated protein 1 (LAP1). TRAF3 regulates pathways leading to the activation of NF-kappa-B and MAP kinases, and plays a central role in the regulation of innate immune response. It modulates signaling pathways leading to the production of cytokines and interferon. As an essential constituent of several E3 ubiquitin-protein ligase complexes, TRAF3 promote 'Lys-63'-linked ubiquitination of target proteins. Moreover, TRAF3 undergoes both 'Lys-48'-linked and 'Lys-63'-linked ubiquitination in response to various stimuli and is deubiquitinated by OTUB1, OTUB2 and OTUD5.

Notable Publications

Author	Pubmed ID	Journal	Application
Liqing Wang	39861816	Viruses	

Storage

Storage:

Store at -20°C. Avoid exposure to light. Stable for one year after shipment.

Storage Buffer:

PBS with 50% glycerol, 0.05% Proclin300, 0.5% BSA, pH7.3

Aliquoting is unnecessary for -20°C storage

For technical support and original validation data for this product please contact:

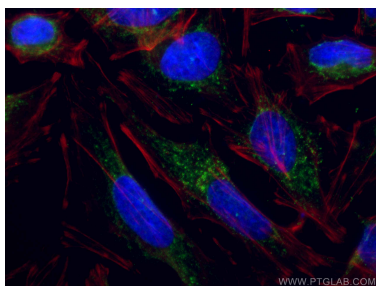
T: 4006900926

E: Proteintech-CN@ptglab.com

W: ptgcn.com

This product is exclusively available under Proteintech Group brand and is not available to purchase from any other manufacturer.

Selected Validation Data



Immunofluorescent analysis of (-20°C Ethanol) fixed HeLa cells using CoraLite® Plus 488 TRAF3 antibody (CL488-66310, Clone: 1E3F4) at dilution of 1:100.