

For Research Use Only

CoraLite® Plus 488-conjugated MYL3 Monoclonal antibody



Catalog Number:CL488-66286

Basic Information

Catalog Number:

CL488-66286

Size:

1000 µg/ml

Source:

Mouse

Isotype:

IgG1

Immunogen Catalog Number:

AG24535

GenBank Accession Number:

BC009790

GeneID (NCBI):

4634

UNIPROT ID:

P08590

Full Name:

myosin, light chain 3, alkali;
ventricular, skeletal, slow

Calculated MW:

22 kDa

Observed MW:

22-25 kDa

Purification Method:

Protein G purification

CloneNo.:

2E4B2

Recommended Dilutions:

IF 1:50-1:500

**Excitation/Emission maxima
wavelengths:**

493 nm / 522 nm

Applications

Tested Applications:

IF/ICC

Species Specificity:

human, rat, mouse, pig

Positive Controls:

IF : C2C12 cells, mouse skeletal muscle tissue

Background Information

MYL3, also named as MLC1v, is an essential light chain of myosin that is associated with muscle contraction. It is expressed in ventricular and slow skeletal muscle. MYL3 may serve as a target for caspase-3 in dying cardiomyocytes. Mutations of MYL3 gene cause hypertrophic cardiomyopathy. MYL3 has been identified as potential serum biomarker for drug induced myotoxicity. Great increase in MYL3 serum concentration has been observed in rats with cardiac and skeletal muscle injury. (PMID:21685905)

Storage

Storage:

Store at -20°C. Avoid exposure to light. Stable for one year after shipment.

Storage Buffer:

PBS with 50% Glycerol, 0.05% Proclin300, 0.5% BSA, pH 7.3.

Aliquoting is unnecessary for -20°C storage

For technical support and original validation data for this product please contact:

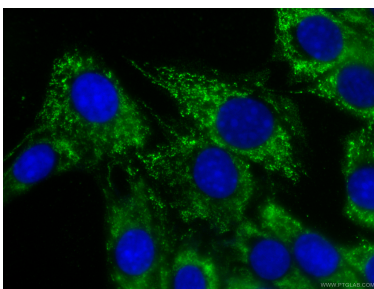
T: 4006900926

E: Proteintech-CN@ptglab.com

W: ptgcn.com

This product is exclusively available under Proteintech Group brand and is not available to purchase from any other manufacturer.

Selected Validation Data



Immunofluorescent analysis of (-20°C Ethanol) fixed C2C12 cells using CL488-66286 (MYL3 antibody) at dilution of 1:100.