

CoraLite® Plus 488-conjugated CLTCL1 Monoclonal antibody

Catalog Number: **CL488-66274**

Basic Information

Catalog Number:

CL488-66274

Size:

1000 µg/ml

Source:

Mouse

Isotype:

IgG2a

GenBank Accession Number:

NM_007098

GeneID (NCBI):

8218

UNIPROT ID:

P53675

Full Name:

clathrin, heavy chain-like 1

Calculated MW:

187 kDa

Observed MW:

180 kDa

Purification Method:

Protein A purification

CloneNo.:

1B5A10

Recommended Dilutions:

IF/ICC 1:50-1:500

**Excitation/Emission maxima
wavelengths:**

493 nm / 522 nm

Applications

Tested Applications:

IF/ICC

Species Specificity:

human

Positive Controls:

IF/ICC : HeLa cells,

Background Information

CLTCL1, also named as CLH22, CLTCL and CLTD, belongs to the clathrin heavy chain family. Clathrin is the major protein of the polyhedral coat of coated pits and vesicles. Two different adapter protein complexes link the clathrin lattice either to the plasma membrane or to the trans-Golgi network. The antibody is specific to CLTCL1. It has no cross reaction to CLTC.

Storage

Storage:

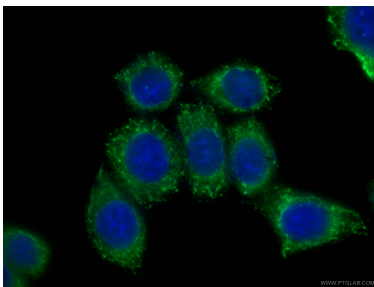
Store at -20°C. Avoid exposure to light. Stable for one year after shipment.

Storage Buffer:

PBS with 50% Glycerol, 0.05% Proclin300, 0.5% BSA, pH 7.3.

Aliquoting is unnecessary for -20°C storage

Selected Validation Data



Immunofluorescent analysis of (-20°C Ethanol) fixed HeLa cells using CL488-66274 (CLTCL1 antibody) at dilution of 1:100.