

CoraLite® Plus 488-conjugated C1qC Monoclonal antibody

Catalog Number: **CL488-66268**

Basic Information

Catalog Number: CL488-66268	GenBank Accession Number: BC009016	Purification Method: Thiophilic affinity chromatograph
Size: 1000 µg/ml	GeneID (NCBI): 714	CloneNo.: 1C5B4
Source: Mouse	UNIPROT ID: P02747	Recommended Dilutions: IF/ICC 1:50-1:500
Isotype: IgM	Full Name: complement component 1, q subcomponent, C chain	Excitation/Emission maxima wavelengths: 493 nm / 522 nm
Immunogen Catalog Number: AG10233	Calculated MW: 245 aa, 26 kDa	
	Observed MW: 26 kDa	

Applications

Tested Applications: IF/ICC	Positive Controls: IF/ICC : HUVEC cells,
Species Specificity: human	

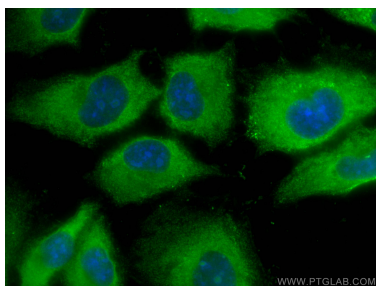
Background Information

The first component of complement, C1, is a calcium-dependent complex of the 3 subcomponents C1q, C1r, and C1s. C1q is composed of 18 polypeptide chains: six A-chains, six B-chains, and six C-chains. Each chain contains a collagen-like region located near the N terminus and a C-terminal globular region. Deficiency of C1q has been associated with lupus erythematosus and glomerulonephritis. This antibody is raised against C1qC which is the C-chain polypeptide of human complement subcomponent C1q.

Storage

Storage:
Store at -20°C. Avoid exposure to light. Stable for one year after shipment.
Storage Buffer:
PBS with 50% Glycerol, 0.05% Proclin300, 0.5% BSA, pH 7.3.
Aliquoting is unnecessary for -20°C storage

Selected Validation Data



Immunofluorescent analysis of (-20°C Methanol) fixed HUVEC cells using CoraLite® Plus 488 C1qC antibody (CL488-66268, Clone: 1C5B4) at dilution of 1:200.