

# CoraLite® Plus 488-conjugated KGA-Specific Monoclonal antibody

Catalog Number: **CL488-66265**

## Basic Information

**Catalog Number:**

CL488-66265

**Size:**

1000 µg/ml

**Source:**

Mouse

**Isotype:**

IgG1

**Immunogen Catalog Number:**

AG24227

**GenBank Accession Number:**

BC038507

**GeneID (NCBI):**

2744

**UNIPROT ID:**

O94925

**Full Name:**

glutaminase

**Calculated MW:**

669 aa, 73 kDa

**Observed MW:**

65 kDa

**Purification Method:**

Protein G purification

**CloneNo.:**

1B11A11

**Recommended Dilutions:**

WB 1:500-1:1000

IF-P 1:50-1:500

**Excitation/Emission maxima wavelengths:**

493 nm / 522 nm

## Applications

**Tested Applications:**

IF-P, WB

**Species Specificity:**

human, mouse, rat

**Positive Controls:**

WB : NIH/3T3 cells, mouse brain tissue

IF-P : mouse brain tissue,

## Background Information

GLS, also named as GLS1 and KIAA0838, belongs to the glutaminase family. It catalyzes the first reaction in the primary pathway for the renal catabolism of glutamine. Glutaminase-, glutamate-, and taurine-immunoreactive neurons develop neurofibrillary tangles in Alzheimer's disease. The glutaminase band in AA/C1 cells is more intense than in HT29 cells, in accordance with measurements of glutaminase activity, and had the same molecular mass of approx. 63 kDa. The bands for both cell lines are clearly different in size from both rat liver glutaminase (58 kDa) and rat kidney glutaminase (65 kDa) (PMID: 12408749). It also reveals a molecular weight of 83-84 kDa as a phosphate-dependent glutaminase (PMID: 447624;7512428). It has 3 isoforms produced by alternative splicing named as KGA, GAM, GAC. This antibody is specific to KGA.

## Storage

**Storage:**

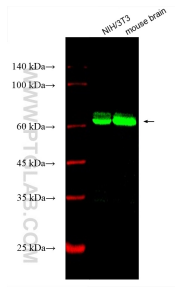
Store at -20°C. Avoid exposure to light. Stable for one year after shipment.

**Storage Buffer:**

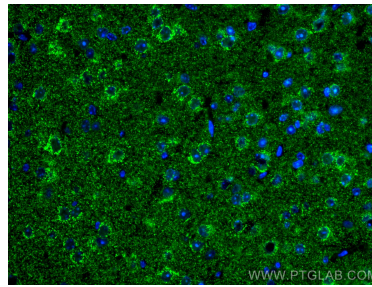
PBS with 50% Glycerol, 0.05% Proclin300, 0.5% BSA, pH 7.3.

Aliquoting is unnecessary for -20°C storage

## Selected Validation Data



Various lysates were subjected to SDS PAGE followed by western blot with CL488-66265 (KGA-Specific antibody) at dilution of 1:500 incubated at room temperature for 1.5 hours.



Immunofluorescent analysis of (4% PFA) fixed mouse brain tissue using CoraLite® Plus 488 KGA-Specific antibody (CL488-66265, Clone: 1B11A11) at dilution of 1:200.