

CoraLite® Plus 488-conjugated IMP3

Monoclonal antibody

Catalog Number: **CL488-66247**

Basic Information

Catalog Number:

CL488-66247

Size:

1000 µg/ml

Source:

Mouse

Isotype:

IgG2b

Immunogen Catalog Number:

AG23602

GenBank Accession Number:

BC020557

GeneID (NCBI):

55272

UNIPROT ID:

Q9NV31

Full Name:IMP3, U3 small nucleolar
ribonucleoprotein, homolog (yeast)**Calculated MW:**

184 aa, 22 kDa

Observed MW:

22 kDa

Purification Method:

Protein A purification

CloneNo.:

1E7D6

Recommended Dilutions:

IF/ICC 1:50-1:500

**Excitation/Emission maxima
wavelengths:**

493 nm / 522 nm

Applications

Tested Applications:

IF/ICC, FC (Intra)

Species Specificity:

human

Positive Controls:

IF/ICC : HepG2 cells,

Background Information

IMP3 is a member of the insulin-like growth factor (IGF-II) mRNA binding protein (IMP) family that consist of IMP1, IMP2, and IMP3. IMP3 is an oncofetal protein associated with aggressive and advanced tumors and is specifically expressed in malignant tumors but not found in benign tissues [PMID:22497850]. IMP3 forms a ternary complex with IMP4 and MPP10 (MPHOSPH10) that interacts with U3 small nucleolar RNA (snoRNA), which is required for the early cleavage steps in pre-rRNA processing [PMID: 12655004]. CoraLite488-Conjugated IMP3 antibody can stain green. Ex: 488nm, Em: 515nm

Storage

Storage:

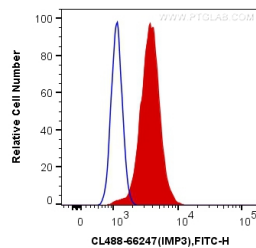
Store at -20°C. Avoid exposure to light. Stable for one year after shipment.

Storage Buffer:

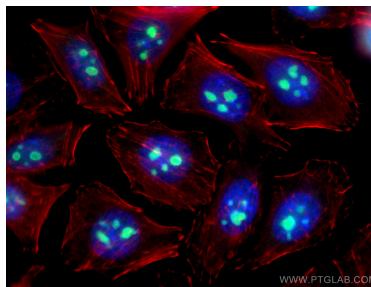
PBS with 50% Glycerol, 0.05% Proclin300, 0.5% BSA, pH 7.3.

Aliquoting is unnecessary for -20°C storage

Selected Validation Data



1X10⁶ HepG2 cells were intracellularly stained with 0.2 μ g CoraLite® Plus 488 Anti-Human IMP3 (CL488-66247, Clone:1E7D6) (red), or 0.2 μ g Mouse IgG2b Isotype Control (CL488-66360-3, Clone: K11B8C4B5) (blue). Cells were fixed and permeabilized with Transcription Factor Staining Buffer Kit (PF00011).



Immunofluorescent analysis of (4% PFA) fixed HepG2 cells using CoraLite® Plus 488-conjugated IMP3 antibody (CL488-66247, Clone: 1E7D6) at dilution of 1:100, CL594-Phalloidin (red).