

For Research Use Only

# CoraLite® Plus 488-conjugated Mammaglobin A Monoclonal antibody



Catalog Number: **CL488-66237**

## Basic Information

Catalog Number: <b>CL488-66237</b>	GenBank Accession Number: <b>BC128252</b>	Purification Method: <b>Protein G purification</b>
Size: <b>1000 µg/ml</b>	GeneID (NCBI): <b>4250</b>	CloneNo.: <b>2E5D4</b>
Source: <b>Mouse</b>	UNIPROT ID: <b>Q13296</b>	Recommended Dilutions: <b>IF/ICC 1:50-1:500</b>
Isotype: <b>IgG1</b>	Full Name: <b>secretoglobin, family 2A, member 2</b>	Excitation/Emission maxima wavelengths: <b>493 nm / 522 nm</b>
Immunogen Catalog Number: <b>AG22485</b>	Calculated MW: <b>93 aa, 10 kDa</b>	

## Applications

Tested Applications: <b>IF/ICC</b>	Positive Controls: <b>IF/ICC : MCF-7 cells,</b>
Species Specificity: <b>human</b>	

## Background Information

Mammaglobin A, also known as SCGB2A2, is a member of the secretoglobin superfamily. Mammaglobin A is a breast cancer-associated antigen almost exclusively over-expressed in primary and metastatic human breast cancers, making it a specific molecular marker and a potential therapeutic target for breast cancer. This monoclonal antibody is raised against full-length of 93-amino acid human mammaglobin A.

## Storage

**Storage:**  
Store at -20°C. Avoid exposure to light. Stable for one year after shipment.  
**Storage Buffer:**  
PBS with 50% Glycerol, 0.05% Proclin300, 0.5% BSA, pH 7.3.  
**Aliquoting is unnecessary for -20°C storage**

For technical support and original validation data for this product please contact:

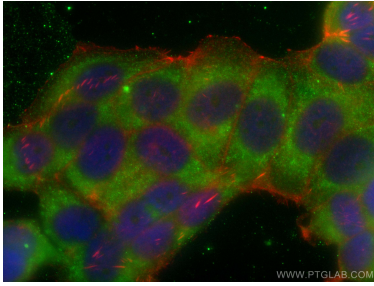
T: 4006900926

E: [Proteintech-CN@ptglab.com](mailto:Proteintech-CN@ptglab.com)

W: [ptgcn.com](http://ptgcn.com)

**This product is exclusively available under Proteintech Group brand and is not available to purchase from any other manufacturer.**

## Selected Validation Data



Immunofluorescent analysis of (-20°C Ethanol)  
fixed MCF-7 cells using CoraLite® Plus 488  
Mammaglobin A antibody (CL488-66237, Clone:  
2E5D4 ) at dilution of 1:200, CL594-phalloidin (red).