

# CoraLite® Plus 488-conjugated S100A10 Monoclonal antibody

Catalog Number: **CL488-66227**

## Basic Information

Catalog Number: <b>CL488-66227</b>	GenBank Accession Number: <b>BC015973</b>	Purification Method: <b>Protein G purification</b>
Size: <b>1000 µg/ml</b>	GeneID (NCBI): <b>6281</b>	CloneNo.: <b>1B3F9</b>
Source: <b>Mouse</b>	UNIPROT ID: <b>P60903</b>	Recommended Dilutions: <b>IF/ICC 1:50-1:500</b>
Isotype: <b>IgG1</b>	Full Name: <b>S100 calcium binding protein A10</b>	Excitation/Emission maxima wavelengths: <b>493 nm / 522 nm</b>
Immunogen Catalog Number: <b>AG23596</b>	Calculated MW: <b>11 kDa</b>	

## Applications

Tested Applications: <b>IF/ICC</b>	Positive Controls: <b>IF/ICC : A431 cells, Saos-2 cells</b>
Species Specificity: <b>human</b>	

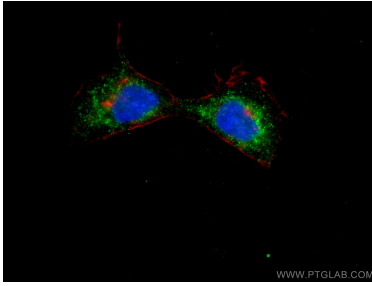
## Background Information

S100A10, also known as p11, is a member of the S100 family of small, EF hand containing dimeric proteins. S100 proteins are localized in the cytoplasm and/or nucleus of a wide range of cells, and involved in the regulation of a number of cellular processes such as cell cycle progression and differentiation. S100A10 is present on the surface of endothelial and other cells in a heterotetrameric complex with another Ca(2+)-binding protein, annexin II. S100A10 may function in exocytosis and endocytosis.

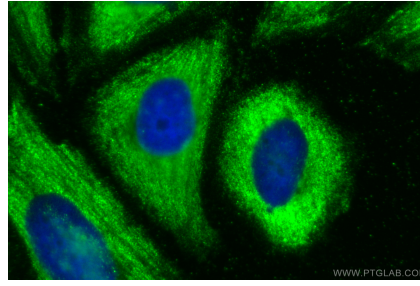
## Storage

**Storage:**  
Store at -20°C. Avoid exposure to light. Stable for one year after shipment.  
**Storage Buffer:**  
PBS with 50% Glycerol, 0.05% Proclin300, 0.5% BSA, pH 7.3.  
**Aliquoting is unnecessary for -20°C storage**

## Selected Validation Data



Immunofluorescent analysis of (4% PFA) fixed A431 cells using CoraLite® Plus 488 S100A10 antibody (CL488-66227, Clone: 1B3F9 ) at dilution of 1:200, CL594-Phalloidin (red).



Immunofluorescent analysis of (-20°C Methanol) fixed Saos-2 cells using CoraLite® Plus 488 S100A10 antibody (CL488-66227, Clone: 1B3F9 ) at dilution of 1:200.