

For Research Use Only

# CoraLite® Plus 488-conjugated TLE1 Monoclonal antibody



Catalog Number: CL488-66216

Featured Product

## Basic Information

Catalog Number:

CL488-66216

Size:

1000 µg/ml

Source:

Mouse

Isotype:

IgG2b

Immunogen Catalog Number:

AG21327

GenBank Accession Number:

BC010100

GeneID (NCBI):

7088

UNIPROT ID:

Q04724

Full Name:

transducin-like enhancer of split 1  
(E(sp1) homolog, Drosophila)

Calculated MW:

83 kDa

Observed MW:

85-95 kDa

Purification Method:

Protein A purification

CloneNo.:

2F2H11

Recommended Dilutions:

IF/ICC 1:50-1:500

Excitation/Emission maxima  
wavelengths:

493 nm / 522 nm

## Applications

Tested Applications:

IF/ICC

Species Specificity:

human

Positive Controls:

IF/ICC : MCF-7 cells,

## Background Information

TLE1 (Transducin-like enhancer protein 1) is a transcriptional corepressor and binds to a number of transcription factors. It can inhibit NF- $\kappa$ B-regulated gene expression and the transcriptional activation mediated by FOXA2, and by CTNNB1 and TCF family members in Wnt signaling. The effects of full-length TLE family members may be modulated by association with dominant-negative AES (PMID: 10660609). TLE1 is highly expressed in postnatal brain (PMID: 29758293; 27852056).

## Storage

Storage:

Store at -20°C. Avoid exposure to light. Stable for one year after shipment.

Storage Buffer:

PBS with 50% Glycerol, 0.05% Proclin300, 0.5% BSA, pH 7.3.

Aliquoting is unnecessary for -20°C storage

For technical support and original validation data for this product please contact:

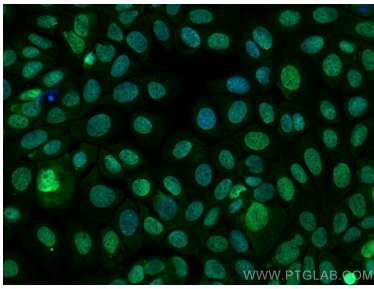
T: 4006900926

E: [Proteintech-CN@ptglab.com](mailto:Proteintech-CN@ptglab.com)

W: [ptgcn.com](http://ptgcn.com)

This product is exclusively available under Proteintech Group brand and is not available to purchase from any other manufacturer.

## Selected Validation Data



Immunofluorescent analysis of (4% PFA) fixed MCF-7 cells using CoraLite® Plus 488 TLE1 antibody (CL488-66216, Clone: 2F2H11 ) at dilution of 1:200.