

For Research Use Only

CoraLite®488-conjugated CD13 Monoclonal antibody

Catalog Number: CL488-66211



Basic Information

Catalog Number: CL488-66211	GenBank Accession Number: BC058928	Purification Method: Protein A purification
Source: Mouse	GeneID (NCBI): 290	CloneNo.: 2D8D11
Isotype: IgG2a	ENSEMBL Gene ID: ENSG00000166825	Recommended Dilutions: IF-P: 1:50-1:500
Immunogen Catalog Number: AG5976	UNIPROT ID: P15144	Excitation/Emission maxima wavelengths: 491 nm / 516 nm
	Full Name: alanyl (membrane) aminopeptidase	
	Calculated MW: 110 kDa	

Applications

Tested Applications: IF-P	Positive Controls: IF-P: human kidney tissue,
Species Specificity: human	

Background Information

CD13, also named as APN, ANPEP (aminopeptidase N) or PEPN, is a heavily glycosylated, ~150-240 kDa, type-II membrane, expressed by most cells of myeloid origin including monocytes, macrophages, granulocytes, and their hematopoietic precursors. It is also abundantly expressed in the brush border of epithelial cells from renal proximal tubules and small intestine, in prostatic epithelial cells, in bile duct canaliculi, in mast cells, and, in some cases, in fibroblasts and smooth muscle cells. CD13 is a multifunctional protein and plays varying roles in cell migration, cell proliferation, cell differentiation and so on. CD13 participates in angiogenesis generating and modulating angiogenic signals, and can be a marker of angiogenic vessels. CD13 is also a pan-myeloid marker, present on mature granulocytes and monocytes. (PMID: 8805662, 10098327, 18603472, 18097955, 17897790, 17888402, 21339174) And this antibody is conjugated with CL488(Ex/Em 488 nm/515 nm).

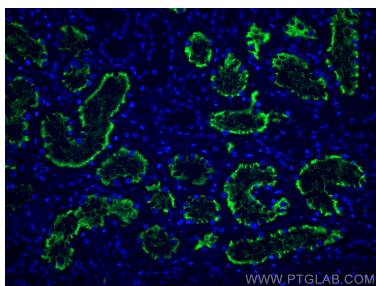
Storage

Storage:
Store at -20°C. Avoid exposure to light. Stable for one year after shipment.
Storage Buffer:
PBS with 50% glycerol, 0.05% Proclin300, 0.5% BSA, pH7.3
Aliquoting is unnecessary for -20°C storage

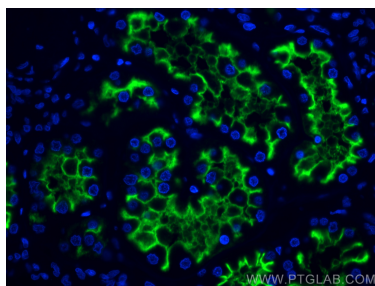
For technical support and original validation data for this product please contact:
T: 4006900926 E: Proteintech-CN@ptglab.com W: ptgcn.com

This product is exclusively available under Proteintech Group brand and is not available to purchase from any other manufacturer.

Selected Validation Data



Immunofluorescent analysis of (4% PFA) fixed human kidney tissue using CoraLite®488 CD13 antibody (CL488-66211, Clone: 2D8D11) at dilution of 1:200.



Immunofluorescent analysis of (4% PFA) fixed human kidney tissue using CoraLite®488 CD13 antibody (CL488-66211, Clone: 2D8D11) at dilution of 1:200.