

# CoraLite® Plus 488-conjugated Beta-2-Microglobulin Monoclonal antibody

Catalog Number: **CL488-66207**

## Basic Information

**Catalog Number:**

CL488-66207

**Size:**

1000 µg/ml

**Source:**

Mouse

**Isotype:**

IgG2b

**GenBank Accession Number:**

BC032589

**GeneID (NCBI):**

567

**ENSEMBL Gene ID:**

ENSG00000166710

**UNIPROT ID:**

P61769

**Full Name:**

beta-2-microglobulin

**Calculated MW:**

14 kDa

**Observed MW:**

13 kDa

**Purification Method:**

Protein A purification

**CloneNo.:**

1C3B7

**Recommended Dilutions:**

IF-P 1:50-1:500

**Excitation/Emission maxima wavelengths:**

493 nm / 522 nm

## Applications

**Tested Applications:**

IF-P

**Species Specificity:**

human

**Positive Controls:**

IF-P : human prostate cancer tissue,

## Background Information

Beta-2-microglobulin (B2M) is a component of MHC class I molecules, which are present on the surface of nearly all nucleated cells. It can be found in body fluids under physiologic conditions as a result of shedding from cell surfaces or intracellular release. B2M has various biological functions, including antigen presentation. Investigations reveal that increased synthesis and release of B2M are present in several malignant diseases.

## Storage

**Storage:**

Store at -20°C. Avoid exposure to light.

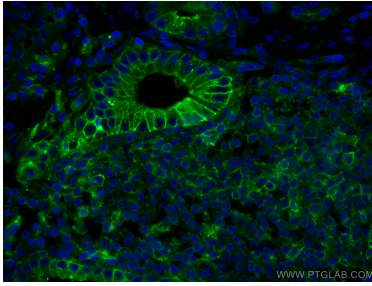
**Storage Buffer:**

PBS with 50% Glycerol, 0.05% Proclin300, 0.5% BSA, pH 7.3.

Aliquoting is unnecessary for -20°C storage

---

## Selected Validation Data



Immunofluorescent analysis of (4% PFA) fixed human prostate cancer tissue using CoraLite® Plus 488 Beta-2-Microglobulin antibody (CL488-66207, Clone: 1C3B7 ) at dilution of 1:100.