

CoraLite® Plus 488-conjugated Apolipoprotein A1 Monoclonal antibody

Catalog Number: CL488-66206

Basic Information

Catalog Number: CL488-66206	GenBank Accession Number: BC005380	Purification Method: Protein A purification
Size: 1000 µg/ml	GeneID (NCBI): 335	CloneNo.: 1C9G5
Source: Mouse	UNIPROT ID: P02647	Recommended Dilutions: IF/ICC 1:50-1:500
Isotype: IgG2b	Full Name: apolipoprotein A-I	Excitation/Emission maxima wavelengths: 493 nm / 522 nm
Immunogen Catalog Number: AG21920	Calculated MW: 31 kDa	
	Observed MW: 26-28 kDa	

Applications

Tested Applications: IF/ICC	Positive Controls: IF/ICC : HepG2 cells, L02 cells
Species Specificity: human, mouse	

Background Information

ApoA1 is a major protein component of high density lipoproteins (HDL) which is associated with reversed cholesterol transport, lipid/cholesterol binding, lecithin/cholesterol acyltransferase (LCAT) activation and specific receptors binding. It is synthesized in the liver and small intestine. Defects of ApoA1 cause low HDL level and systemic non-neuropathic amyloidosis. Serum concentration of ApoA1 is inversely related to the risk of developing atherosclerosis. This antibody was generated against the C-terminal region of human ApoA1.

Storage

Storage:
Store at -20°C. Avoid exposure to light. Stable for one year after shipment.
Storage Buffer:
PBS with 50% Glycerol, 0.05% Proclin300, 0.5% BSA, pH 7.3.
Aliquoting is unnecessary for -20°C storage

For technical support and original validation data for this product please contact:

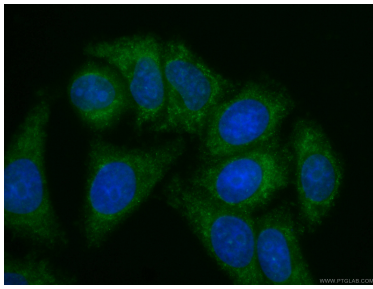
T: 4006900926

E: Proteintech-CN@ptglab.com

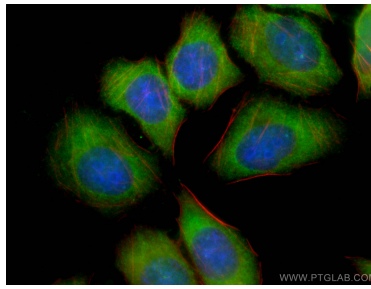
W: ptgcn.com

This product is exclusively available under Proteintech Group brand and is not available to purchase from any other manufacturer.

Selected Validation Data



Immunofluorescent analysis of (-20°C Ethanol) fixed HepG2 cells using CL488-66206 (Apolipoprotein AI antibody) at dilution of 1:100.



Immunofluorescent analysis of (-20°C Ethanol) fixed L02 cells using CoraLite® Plus 488-conjugated Apolipoprotein AI antibody (CL488-66206, Clone: 1C9G5) at dilution of 1:100, CL594-Phalloidin (red).