

For Research Use Only

CoraLite® Plus 488-conjugated Myoglobin Monoclonal antibody

Catalog Number: CL488-66205



Basic Information

Catalog Number:

CL488-66205

Size:

1000 µg/ml

Source:

Mouse

Isotype:

IgG1

Immunogen Catalog Number:

AG8979

GenBank Accession Number:

BC014547

GeneID (NCBI):

4151

UNIPROT ID:

P02144

Full Name:

myoglobin

Calculated MW:

154 aa, 17 kDa

Observed MW:

17-18 kDa

Purification Method:

Protein G purification

CloneNo.:

1A4F7

Excitation/Emission maxima wavelengths:

493 nm / 522 nm

Applications

Tested Applications:

FC (Intra)

Species Specificity:

human, mouse

Background Information

Myoglobin is a cytoplasmic hemoprotein that is expressed primarily in cardiomyocytes and oxidative skeletal muscle fibers, functioning on facilitating oxygen transport and modulating nitric oxide homeostasis within cardiac and skeletal myocytes. Recent studies indicated that myoglobin was also expressed in non-muscle tissues. This antibody well recognized endogenous myoglobin in muscle lysates.

Storage

Storage:

Store at -20°C. Avoid exposure to light. Stable for one year after shipment.

Storage Buffer:

PBS with 50% Glycerol, 0.05% Proclin300, 0.5% BSA, pH 7.3.

Aliquoting is unnecessary for -20°C storage

For technical support and original validation data for this product please contact:

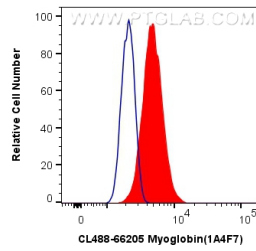
T: 4006900926

E: Proteintech-CN@ptglab.com

W: ptgcn.com

This product is exclusively available under Proteintech Group brand and is not available to purchase from any other manufacturer.

Selected Validation Data



1X10⁶ C2C12 cells were intracellularly stained with 0.8 ug CoraLite® Plus 488 Anti-Human Myoglobin (CL488-66205, Clone:1A4F7) (red), or 0.8 ug Control Antibody. Cells were fixed with 4% PFA and permeabilized with Flow Cytometry Perm Buffer (PF00011-C).