

# CoraLite® Plus 488-conjugated ERK1/2 Monoclonal antibody

Catalog Number: **CL488-66192**

## Basic Information

Catalog Number: <b>CL488-66192</b>	GenBank Accession Number: <b>BC013992</b>	Purification Method: <b>Protein G purification</b>
Size: <b>1000 µg/ml</b>	GeneID (NCBI): <b>5595</b>	CloneNo.: <b>4G8A11</b>
Source: <b>Mouse</b>	UNIPROT ID: <b>P27361</b>	Recommended Dilutions: <b>IF/ICC 1:50-1:500</b>
Isotype: <b>IgG1</b>	Full Name: <b>mitogen-activated protein kinase 3</b>	Excitation/Emission maxima wavelengths: <b>493 nm / 522 nm</b>
Immunogen Catalog Number: <b>AG20350</b>	Calculated MW: <b>43 kDa</b>	

## Applications

Tested Applications: <b>IF/ICC, FC (Intra)</b>	Positive Controls: <b>IF/ICC : HeLa cells,</b>
Species Specificity: <b>human, mouse</b>	

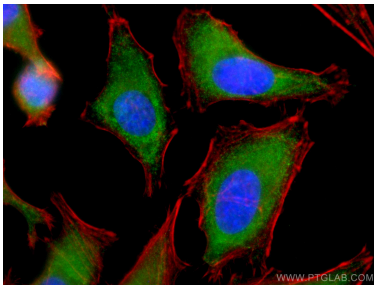
## Background Information

ERK1 and ERK2 belongs to the protein kinase superfamily. It is involved in both the initiation and regulation of meiosis, mitosis, and postmitotic functions in differentiated cells by phosphorylating a number of transcription factors such as ELK-1. ERK1/2 catalized the reaction: ATP + a protein = ADP + a phosphoprotein. It is activated by tyrosine phosphorylation in response to INS and NGF. The antibody is conjugated with CL488, Ex/Em 488 nm/515 nm.

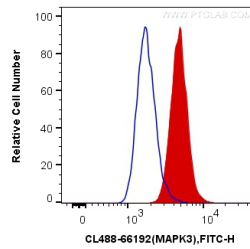
## Storage

**Storage:**  
Store at -20°C. Avoid exposure to light. Stable for one year after shipment.  
**Storage Buffer:**  
PBS with 50% Glycerol, 0.05% Proclin300, 0.5% BSA, pH 7.3.  
**Aliquoting is unnecessary for -20°C storage**

## Selected Validation Data



Immunofluorescent analysis of (-20°C Ethanol) fixed HeLa cells using Coralite® Plus 488 ERK1/2 antibody (CL488-66192, Clone: 4G8A11 ) at dilution of 1:100, (CL594-Phalloidin, red).



1X10<sup>6</sup> HepG2 cells were intracellularly stained with 0.4 ug Coralite® Plus 488 Anti-Human ERK1/2 (CL488-66192, Clone:4G8A11) (red), or 0.4 ug Mouse IgG1 Isotype Control (CL488-66360, Clone: T1F8D3F10) (blue). Cells were fixed with 4% PFA and permeabilized with Flow Cytometry Perm Buffer (PF00011-C).