

For Research Use Only

# CoraLite® Plus 488-conjugated Vitamin D binding protein Monoclonal antibody

Catalog Number:CL488-66175



## Basic Information

Catalog Number: CL488-66175	GenBank Accession Number: BC057228	Purification Method: Protein G purification
Concentration: 1000 ug/ml	GeneID (NCBI): 2638	CloneNo.: 1E4D10
Source: Mouse	UNIPROT ID: P02774	Recommended Dilutions: IF/ICC 1:50-1:500
Isotype: IgG1	Full Name: group-specific component (vitamin D binding protein)	Excitation/Emission maxima wavelengths: 493 nm / 522 nm
Immunogen Catalog Number: AG9803	Calculated MW: 474 aa, 53 kDa	
	Observed MW: 52-58 kDa	

## Applications

Tested Applications: IF/ICC	Positive Controls: IF/ICC : U-937 cells, HepG2 cells
Species Specificity: human	

## Background Information

Vitamin D binding protein is a sparsely glycosylated serum protein responsible for highly specific binding and tissue-specific delivery of vitamin D and its metabolites. In addition, it is also an actin scavenger, and is the precursor to the immunomodulatory protein, Gc-MAF. Vitamin D binding protein has been proposed to have significant roles in C5a chemotaxis, osteoclast development and possibly in macrophage activation/recruitment.

## Storage

**Storage:**  
Store at -20°C. Avoid exposure to light. Stable for one year after shipment.

**Storage Buffer:**  
PBS with 50% Glycerol, 0.05% Proclin300, 0.5% BSA, pH 7.3.

**Aliquoting is unnecessary for -20°C storage**

For technical support and original validation data for this product please contact:

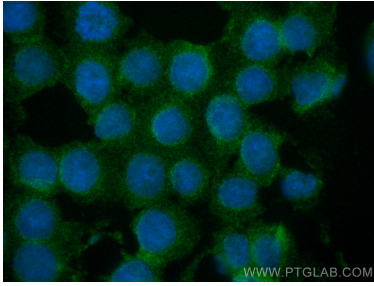
T: 4006900926

E: [Proteintech-CN@ptglab.com](mailto:Proteintech-CN@ptglab.com)

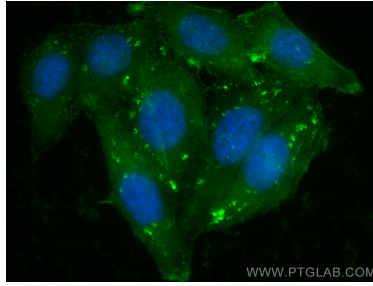
W: [ptgcn.com](http://ptgcn.com)

**This product is exclusively available under Proteintech Group brand and is not available to purchase from any other manufacturer.**

## Selected Validation Data



Immunofluorescent analysis of (4% PFA) fixed U-937 cells using CoraLite® Plus 488 Vitamin D binding protein antibody (CL488-66175, Clone: 1E4D10 ) at dilution of 1:100.



Immunofluorescent analysis of (-20°C Ethanol) fixed HepG2 cells using CoraLite® Plus 488 Vitamin D binding protein antibody (CL488-66175, Clone: 1E4D10 ) at dilution of 1:200.