

For Research Use Only



# CoraLite® Plus 488-conjugated Complement factor B Monoclonal antibody

Catalog Number: **CL488-66154**

## Basic Information

Catalog Number: CL488-66154	GenBank Accession Number: BC007990	Purification Method: Thiophilic affinity chromatograph
Size: 1000 µg/ml	GeneID (NCBI): 629	CloneNo.: 8D2B6
Source: Mouse	UNIPROT ID: P00751	Recommended Dilutions: IF 1:50-1:500
Isotype: IgM	Full Name: complement factor B	Excitation/Emission maxima wavelengths: 493 nm / 522 nm
Immunogen Catalog Number: AG19107	Calculated MW: 86 kDa	
	Observed MW: 93 kDa	

## Applications

Tested Applications:  
IF-P

Species Specificity:  
human

Positive Controls:

IF : human liver tissue,

## Background Information

Complement factor B (CFB) is a component of the alternative pathway of complement activation. Complement factor B is cleaved into Ba and Bb by factor D in the presence of C3b. The active subunit Bb is a serine protease which associates with C3b to form the alternative pathway C3 convertase. Bb is involved in the proliferation of preactivated B lymphocytes, while Ba inhibits their proliferation.

## Storage

Storage:

Store at -20°C. Avoid exposure to light. Stable for one year after shipment.

Storage Buffer:

PBS with 50% Glycerol, 0.05% Proclin300, 0.5% BSA, pH 7.3.

Aliquoting is unnecessary for -20°C storage

For technical support and original validation data for this product please contact:

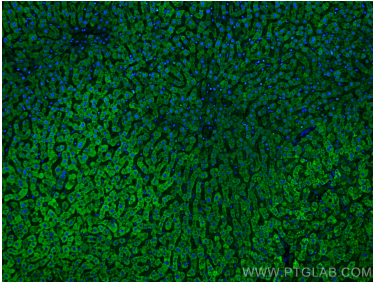
T: 4006900926

E: [Proteintech-CN@ptglab.com](mailto:Proteintech-CN@ptglab.com)

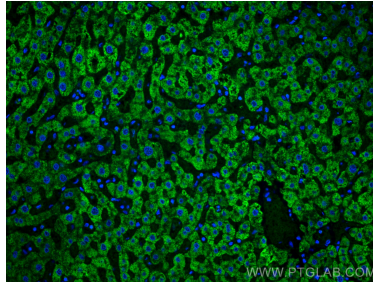
W: [ptgcn.com](http://ptgcn.com)

**This product is exclusively available under Proteintech Group brand and is not available to purchase from any other manufacturer.**

## Selected Validation Data



Immunofluorescent analysis of (4% PFA) fixed human liver tissue using CoralLite® Plus 488 Complement factor B antibody (CL488-66154, Clone: 8D2B6 ) at dilution of 1:200.



Immunofluorescent analysis of (4% PFA) fixed human liver tissue using CoralLite® Plus 488 Complement factor B antibody (CL488-66154, Clone: 8D2B6 ) at dilution of 1:200.